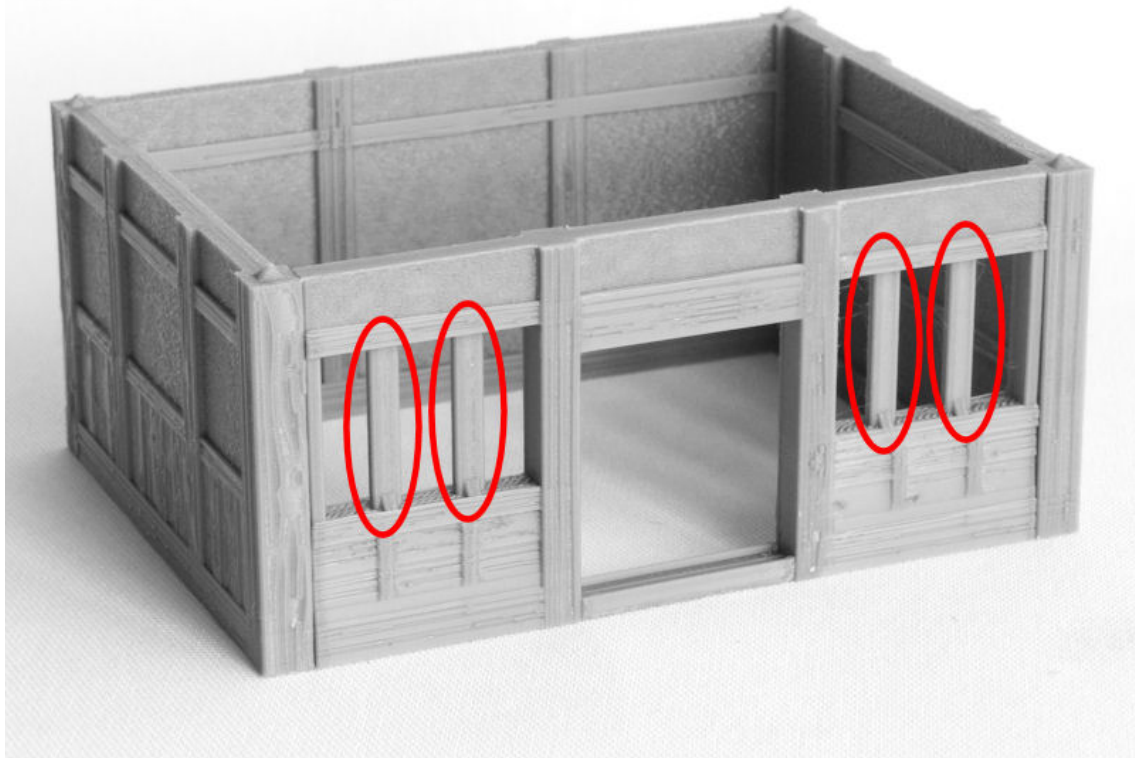




## SAMURAI SHOPS

1. *Shop-1F\_wood.STL*  
**OR** *Shop-1F\_white.STL*  
**OR** *Shop-1F\_slats.STL*

*Shop-1Ffront\_solid.STL*  
**OR** *Shop-1Ffront\_wood.STL*  
**OR** *Shop-1Ffront\_windows.STL* (remove red print supports)  
**OR** *Shop-1Ffront\_box\_windows.STL* (remove red supports)  
**OR** *Shop-1Ffront\_sliding doors.STL*  
*Shop-1Ffront\_door.STL* x 6



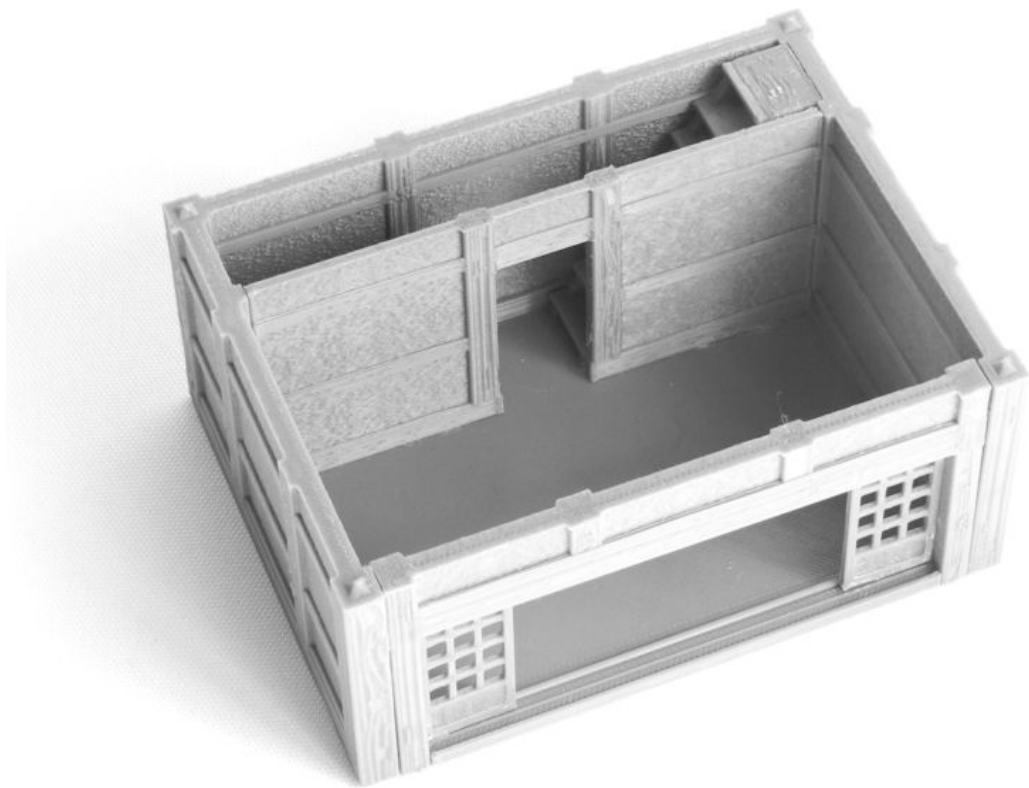
2. *Shop-1F\_floor.STL*  
*Shop-stairs.STL*

*Shop-innerwall.STL*

**OR**

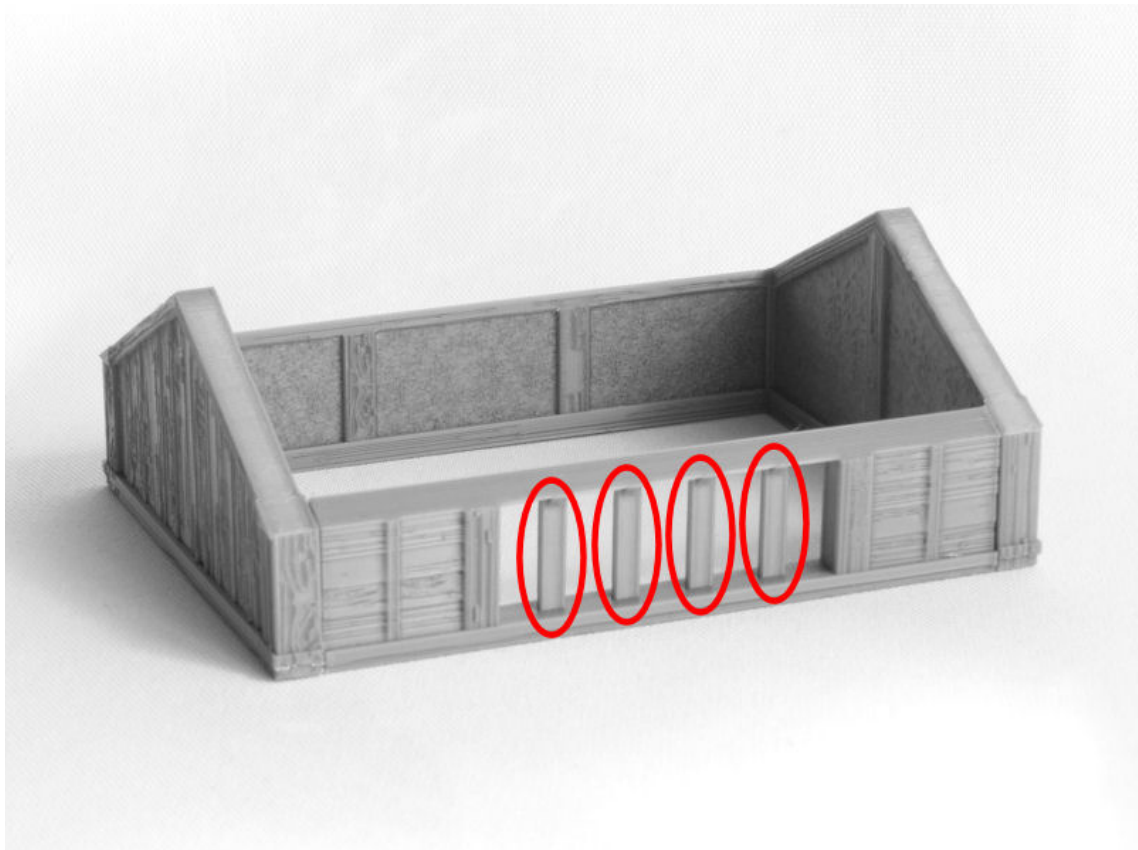
*Shop-innerwall\_with\_curtain.STL*

TIP: Paint inner wall and stairs before gluing into building.



3. *Shop-2F\_wood\_short.STL* (or "tall")  
**OR** *Shop-2F\_white\_short.STL* (or "tall")  
**OR** *Shop-2F\_slats\_short.STL* (or "tall")

- Shop-2Ffront\_tall\_white.STL* (or "short")  
**OR** *Shop-2Ffront\_tall\_woodslats.STL* (or "short")  
**OR** *Shop-2Ffront\_tall\_grills.STL* (or "short")  
**OR** *Shop-2Ffront\_tall\_1window.STL* (remove red supports)  
**OR** *Shop-2Ffront\_tall\_2windows.STL* (remove red supports)  
**OR** *Shop-2Ffront\_tall\_boxwindow.STL* (remove red supports)

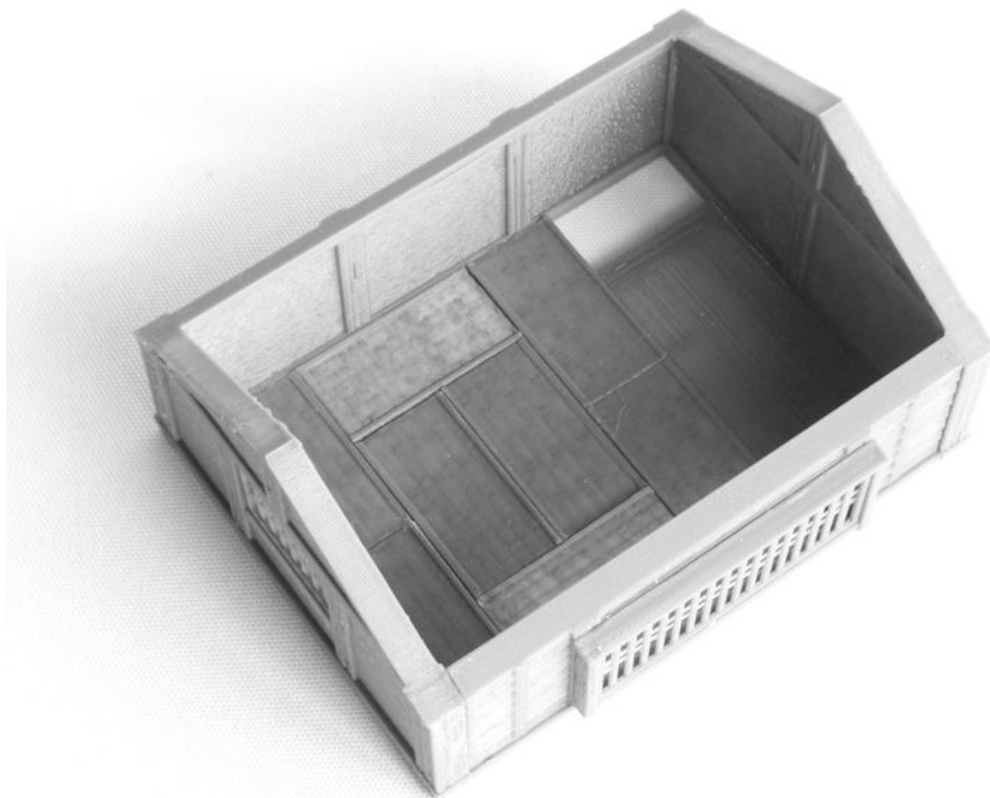


4. *Shop-2F\_floor.STL*

*Shop-2F\_floor\_big.STL*

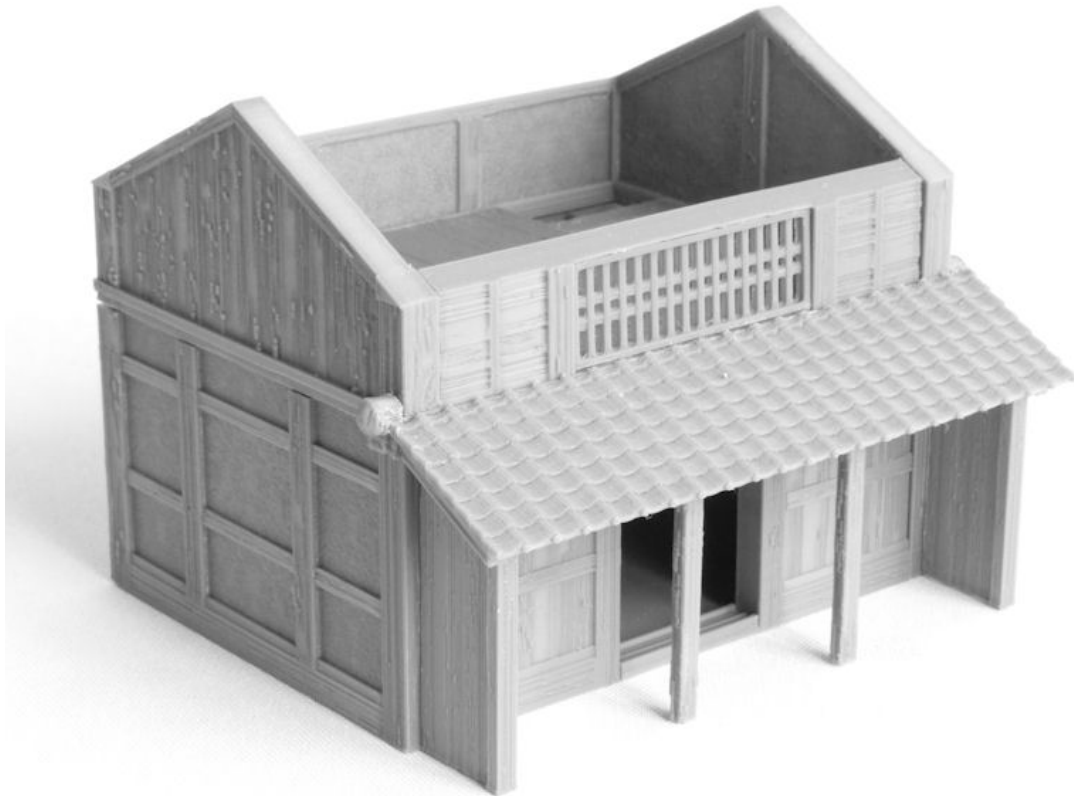
**OR**

*Shop-2F\_tatami.STL* **x 8**



5. *Shop-frontroof\_tiles.STL*  
**OR**  
*Shop-frontroof\_wood.STL*

*Shop-frontroof\_post.STL* **x 4**  
**OR**  
*Shop-frontroof\_post.STL* **x 2**  
*Shop-frontroof\_wall.STL* **x 2**



6. *Shop-roof\_tiles.STL* x 2  
**OR**  
*Shop-roof\_wood.STL* x 2

