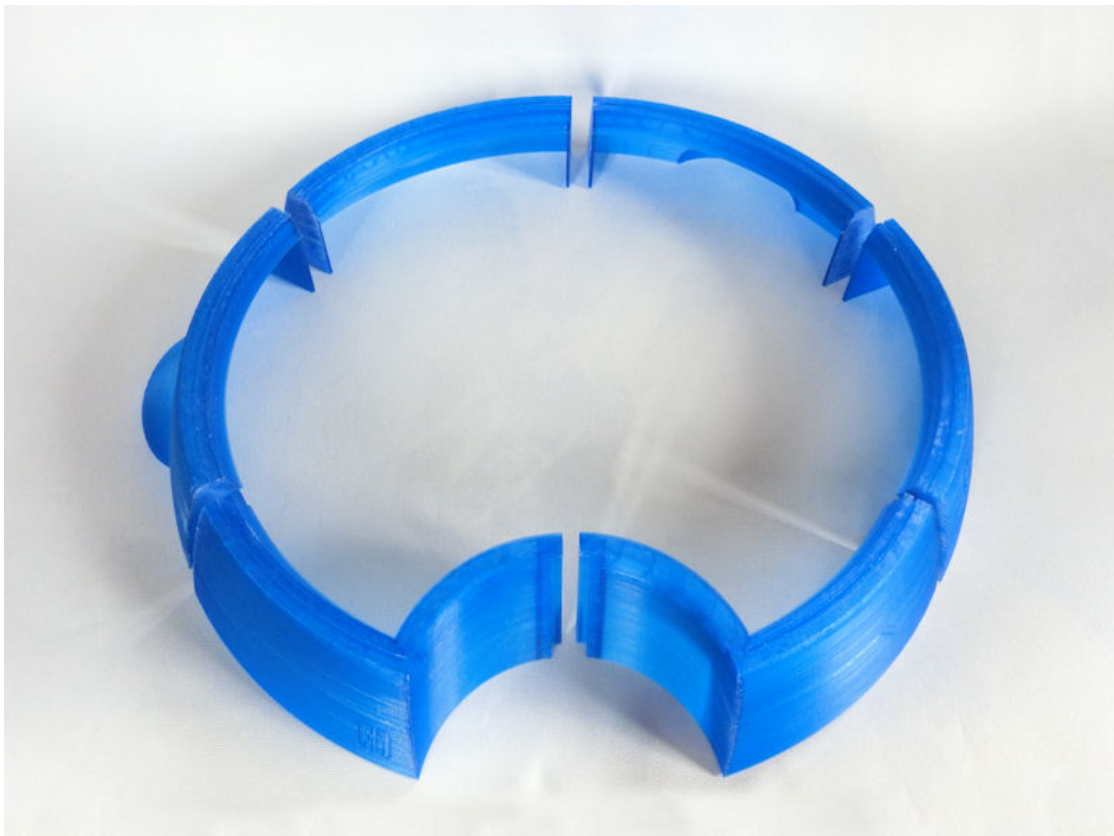




TALI LANDING PAD

1. *LandingPad-wall1.STL*
LandingPad-wall24.STL **x 2**
LandingPad-wall3.STL
LandingPad-wall5.STL
LandingPad-wall6.STL



2. *LandingPad-ring1.STL*
LandingPad-ring234.STL **x 3**
LandingPad-ring5.STL
LandingPad-ring6.STL



3. *LandingPad-elevator_frame.STL*
LandingPad-elevator_hexagon.STL
OR
LandingPad-elevator_symbol.STL



4. *LandingPad-top.STL* (big print beds)

OR

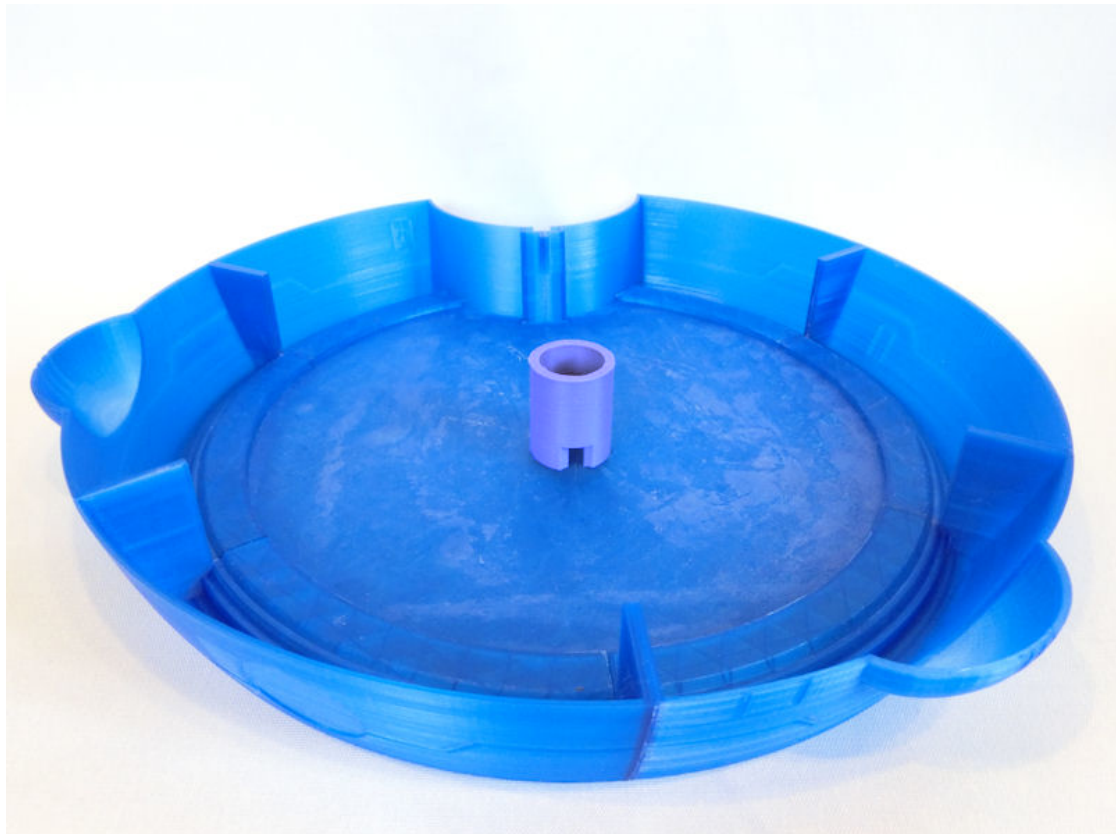
LandingPad-top1.STL

LandingPad-top2.STL

LandingPad-top3.STL

LandingPad-top4.STL

LandingPad-support.STL



5. *LandingPad-forcefield.STL*

LandingPad-wall_symbol.STL