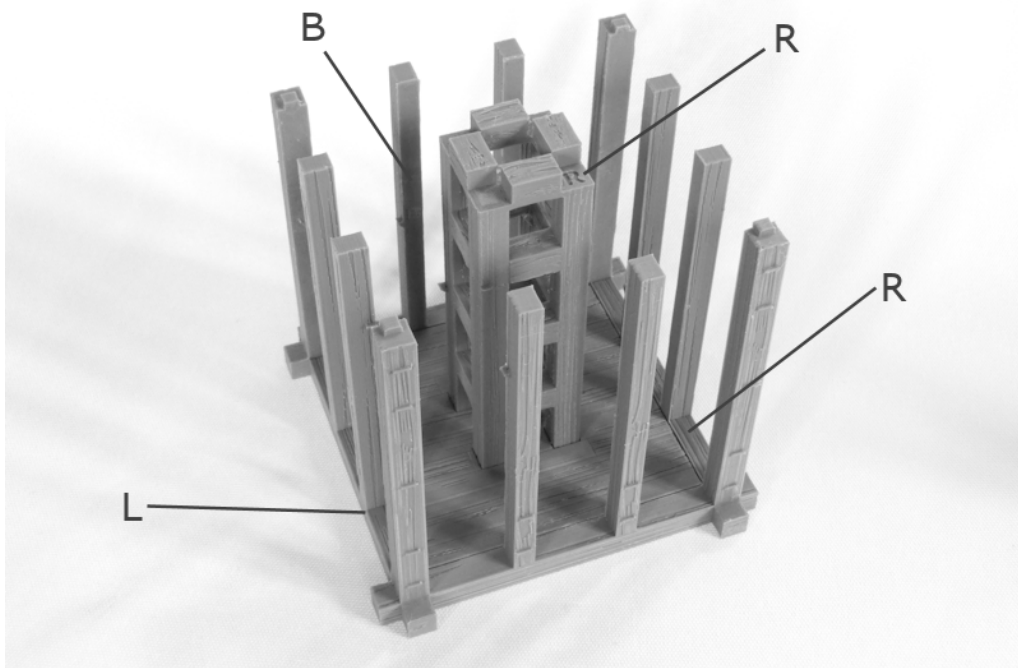




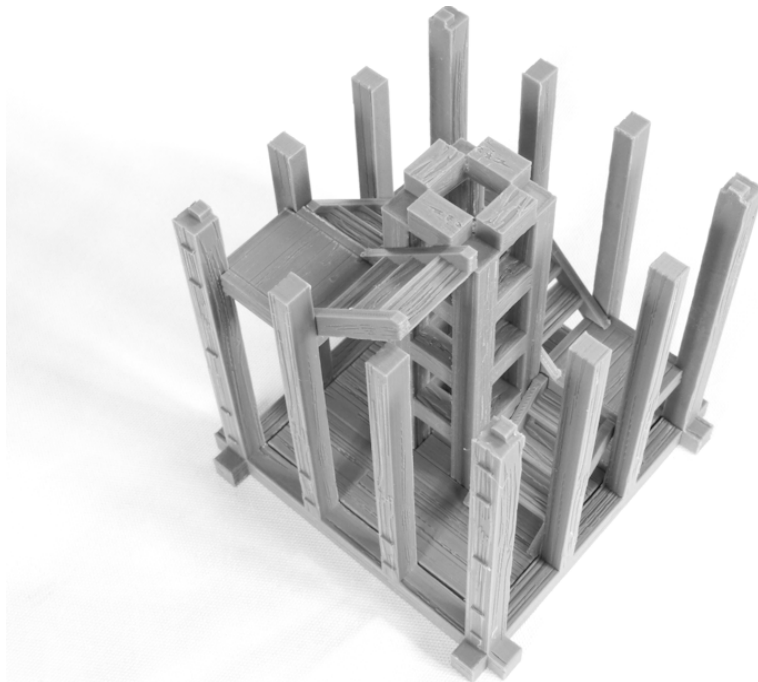
## SAMURAI WATCHTOWER

### Ground Level Section:

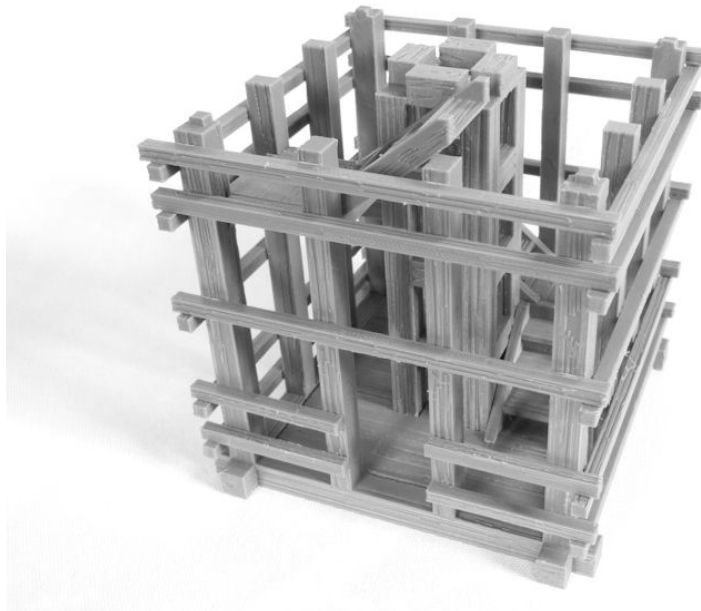
1. *Watchtower-front\_door.STL*  
*Watchtower-back.STL*  
*Watchtower-left.STL*  
*Watchtower-right.STL*  
*Watchtower-floor\_bottom.STL*  
*Watchtower-centre.STL*



2. *Watchtower-steps.STL* **x 4** (cut bottom tabs off lowest staircase)  
*Watchtower-platform.STL* **x 3**

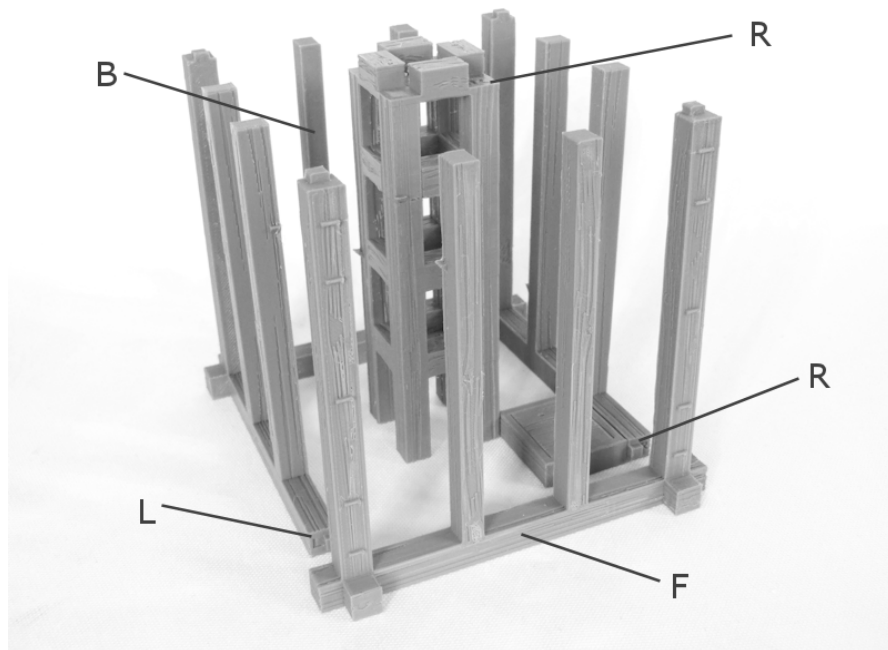


3. *Watchtower-beam.STL* **x 18**  
*Watchtower-beam\_door.STL* **x 4**

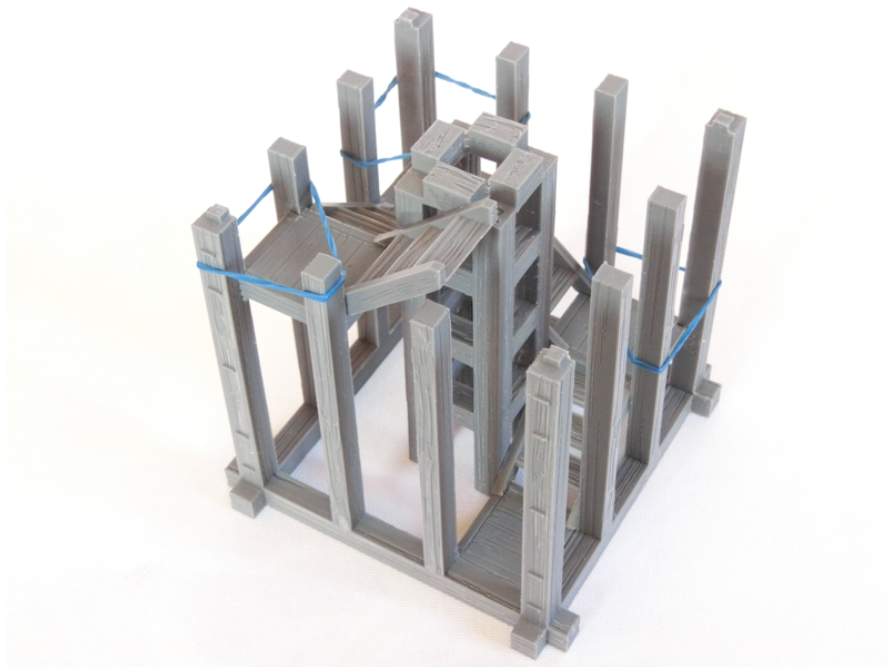


## Mid-Level Section:

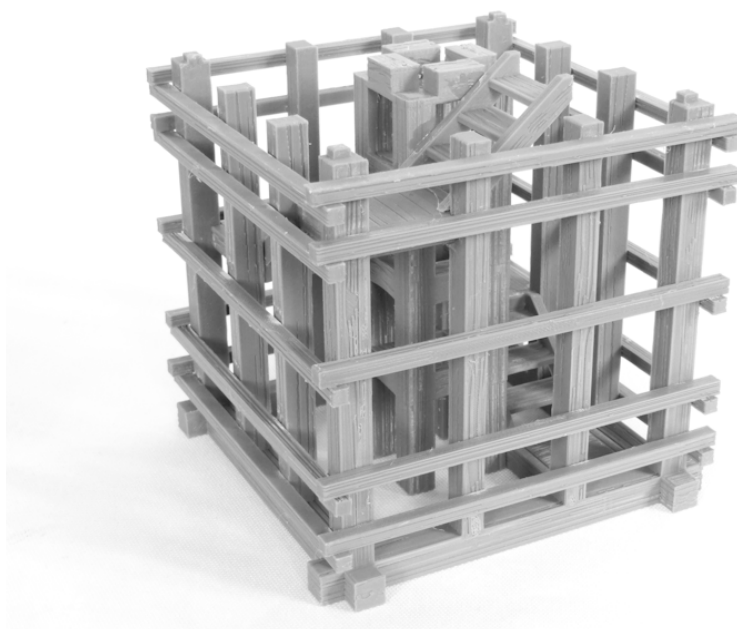
- 4. *Watchtower-front.STL*
- Watchtower-back.STL*
- Watchtower-left.STL*
- Watchtower-right.STL*
- Watchtower-platform\_middle.STL*
- Watchtower-centre.STL*



- 5. *Watchtower-steps.STL* **x 4**
- Watchtower-platform.STL* **x 3**

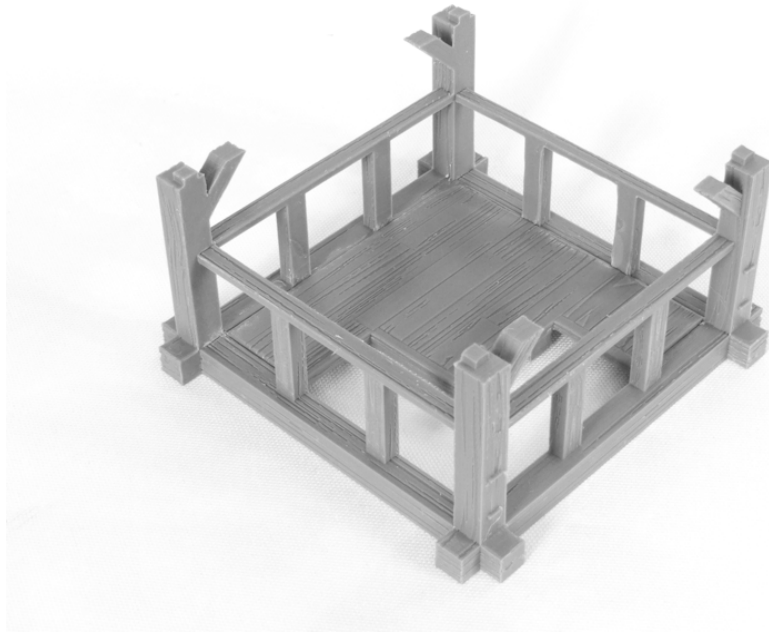


6. *Watchtower-beam.STL* x 20

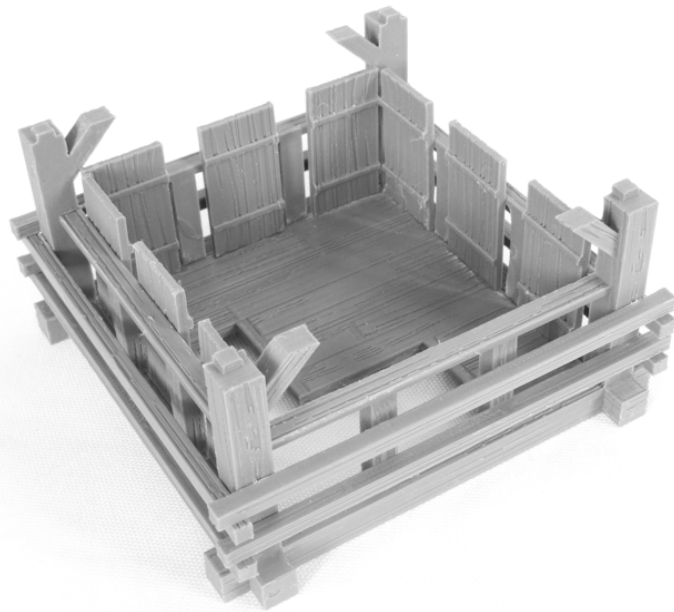


## Top Level Section:

- 7. *Watchtower-top\_front.STL* **x 2**
- Watchtower-top\_side.STL* **x 2**
- Watchtower-top\_floor.STL*



- 8. *Watchtower-beam.STL* **x 8**
- Watchtower-shield.STL* **x 9**



9. *Watchtower-roof.STL* x 2 (supports required)

