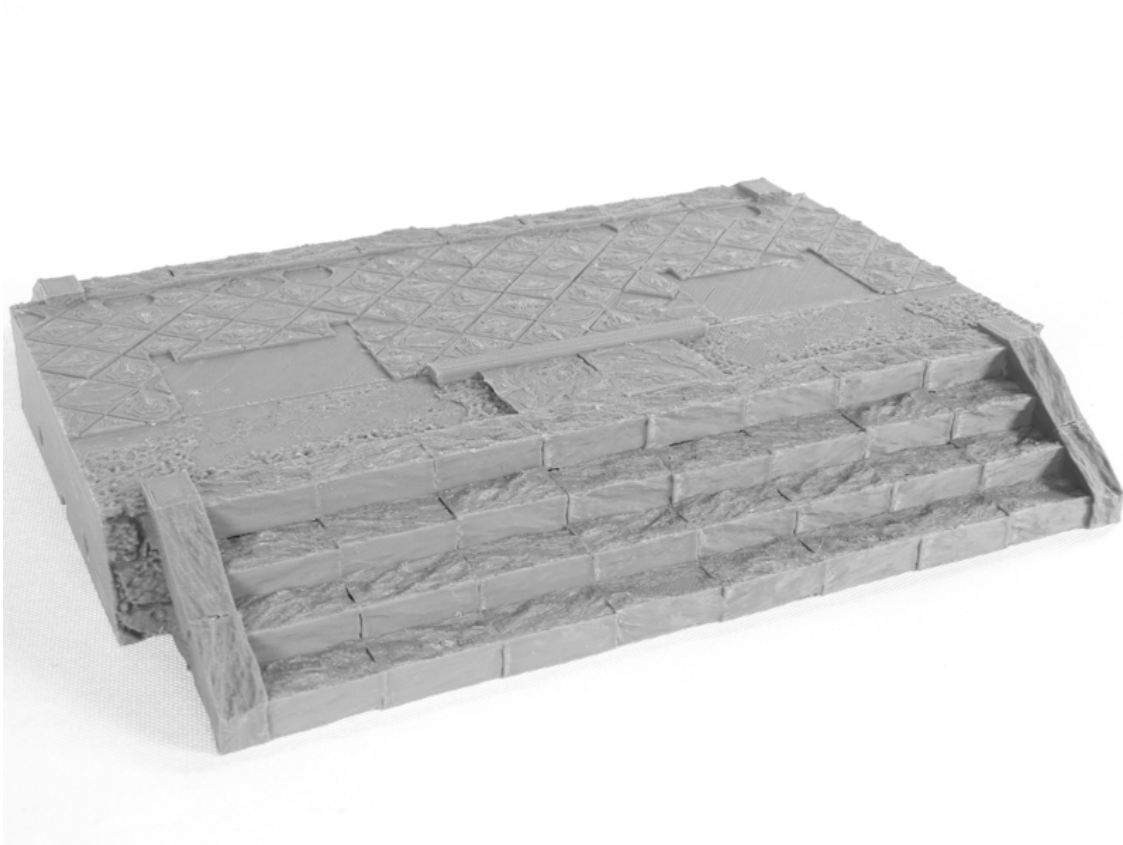




SAMURAI TEMPLE OUTER GATE

1. *TempleOuterGate-base_left1.STL* (for smaller printers)
TempleOuterGate-base_left2.STL
TempleOuterGate-base_right1.STL
TempleOuterGate-base_right2.STL
OR
TempleOuterGate-base_combined.STL
(240mm print bed required)



2. *TempleOuterGate-joiners.STL*

TempleOuterGate-1F_left1.STL (for smaller printers)

TempleOuterGate-1F_left2.STL

TempleOuterGate-1F_right1.STL

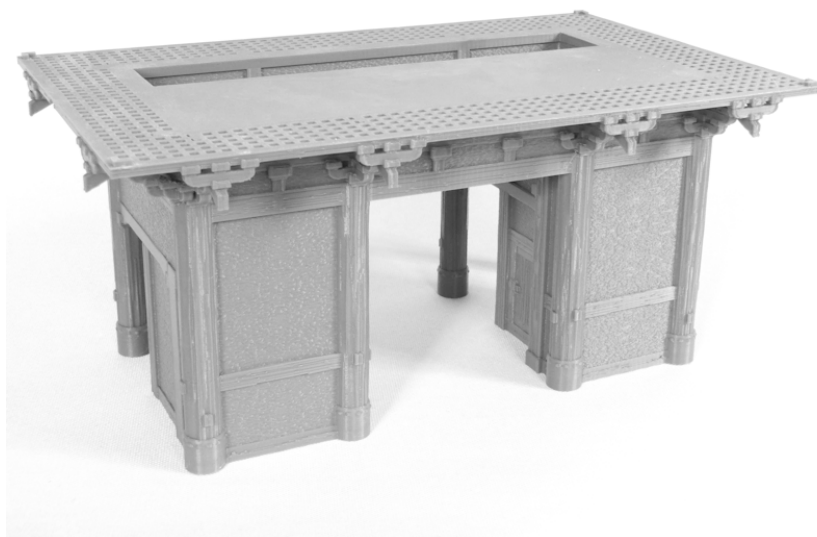
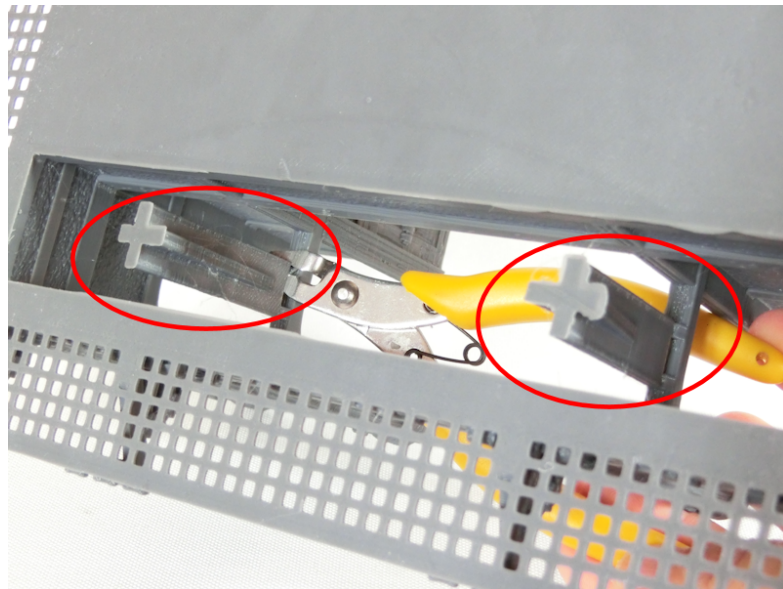
TempleOuterGate-1F_right2.STL

OR

TempleOuterGate-1F_combined.STL

(244mm print bed required)

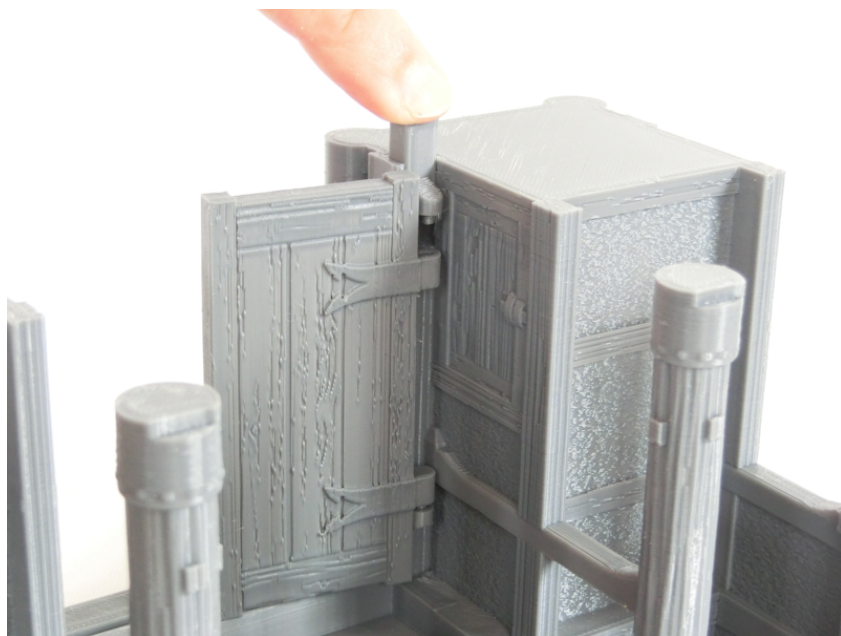
(remove beam print supports, marked in red)



3. *TempleOuterGate-1F_left3.STL*
TempleOuterGate-1F_right3.STL
TempleOuterGate-1F_roof_left.STL
TempleOuterGate-1F_roof_right.STL



4. *TempleOuterGate-1F_gates.STL*
TempleOuterGate-1F_hinges.STL



5. *TempleOuterGate-1F_fences.STL* (optional)

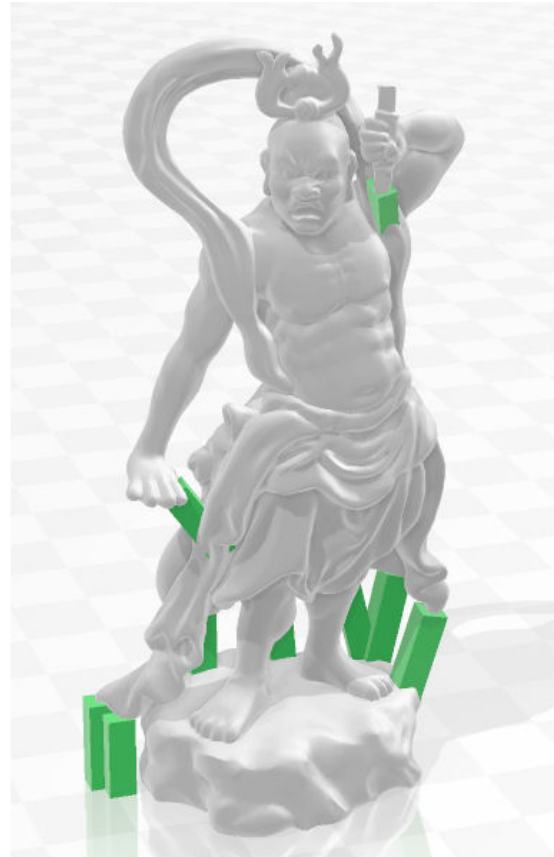


6. *TempleOuterGate-statue_left.STL* (supports required)
TempleOuterGate-statue_right.STL (supports required)

OR

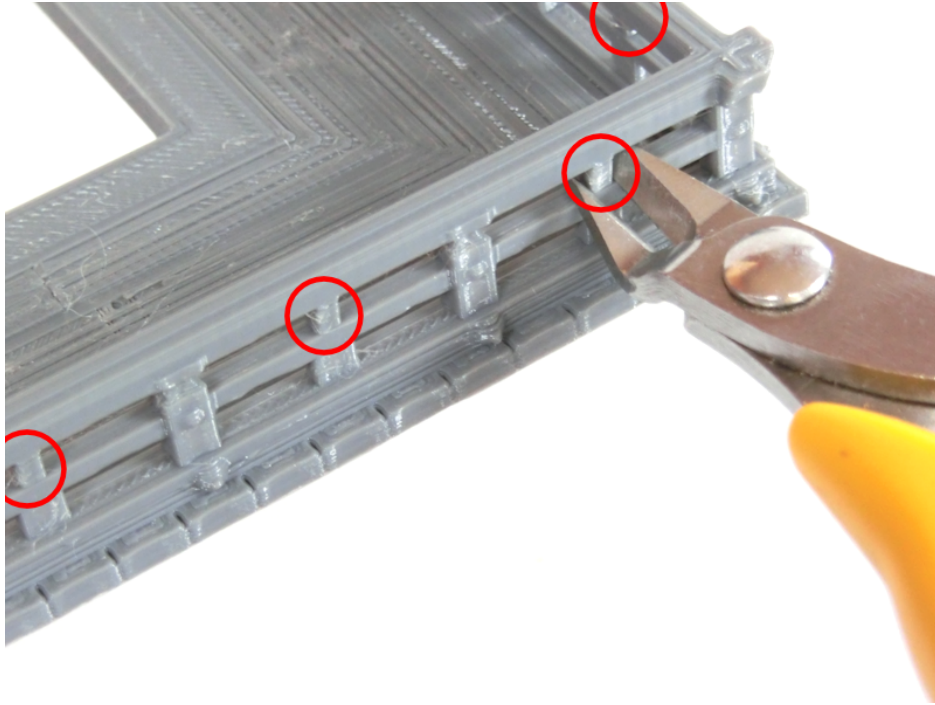
TempleOuterGate-statue_left_with_supports.STL
TempleOuterGate-statue_right_with_supports.STL

(cut off print supports, marked in green)



7. *TempleOuterGate-2F_balcony_left.STL* **x 2** (for smaller printers)
TempleOuterGate-2F_balcony_right.STL **x 2**
OR
TempleOuterGate-2F_balcony_combined.STL
(250mm print bed required)

(remove railing print supports, marked in red)

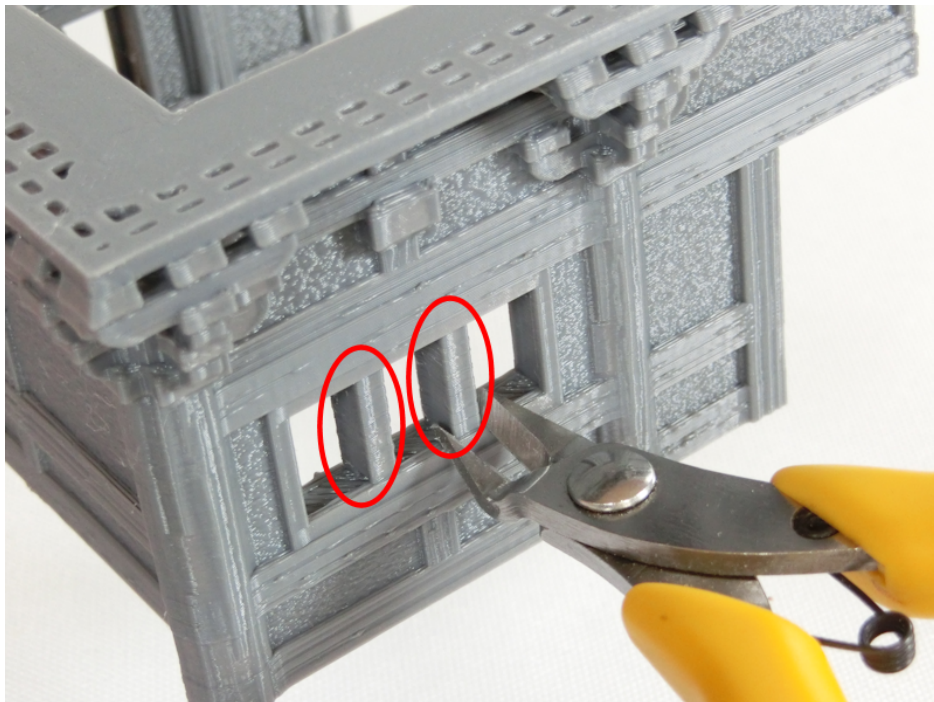


8. *TempleOuterGate-2F_trapdoor.STL*
TempleOuterGate-2F_floor.STL **x 4**

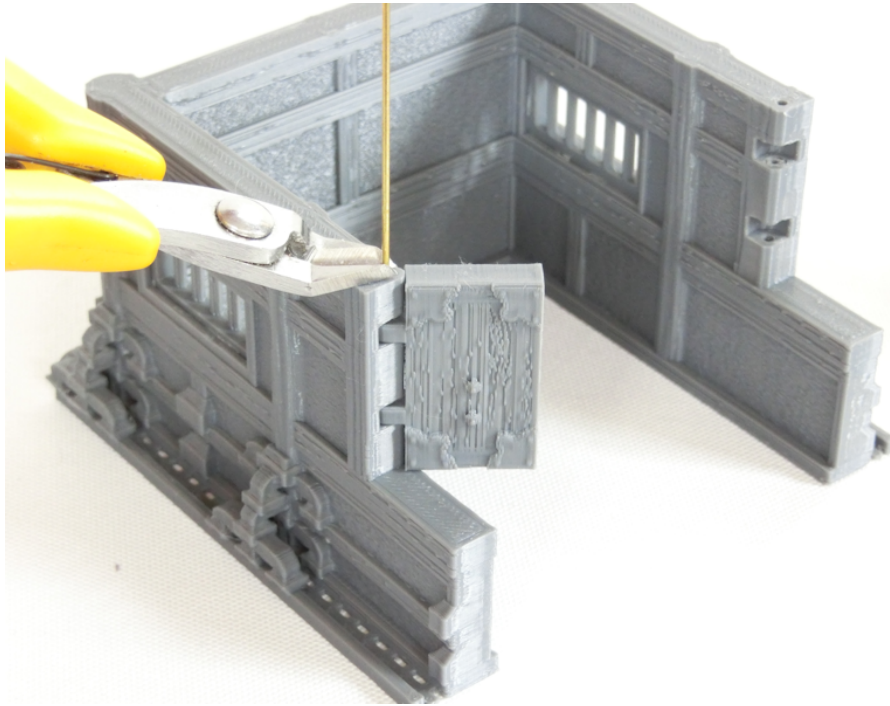


9. *TempleOuterGate-2F.STL* **x 2**

(remove window print supports, marked in red)



10. *TempleOuterGate-2F_window.STL* x 4
TempleOuterGate-2F_doors.STL x 2



11. *TempleOuterGate-2F_roof_left.STL* **x 2** (for smaller printers)
TempleOuterGate-2F_roof_right.STL **x 2** (for smaller printers)
OR
TempleOuterGate-2F_roof_combined.STL **x 2**
(280mm print bed required)

(remove corner print supports, marked in red)

