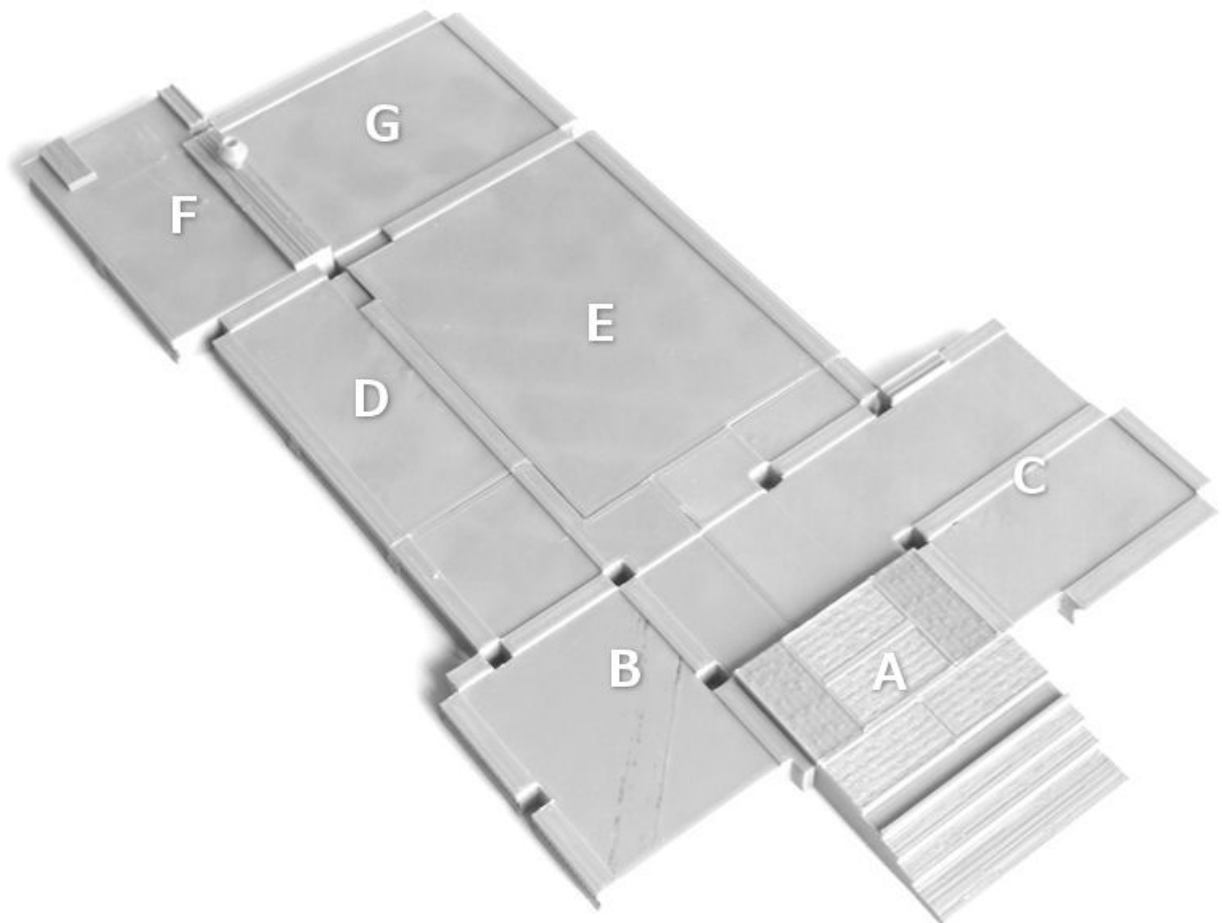


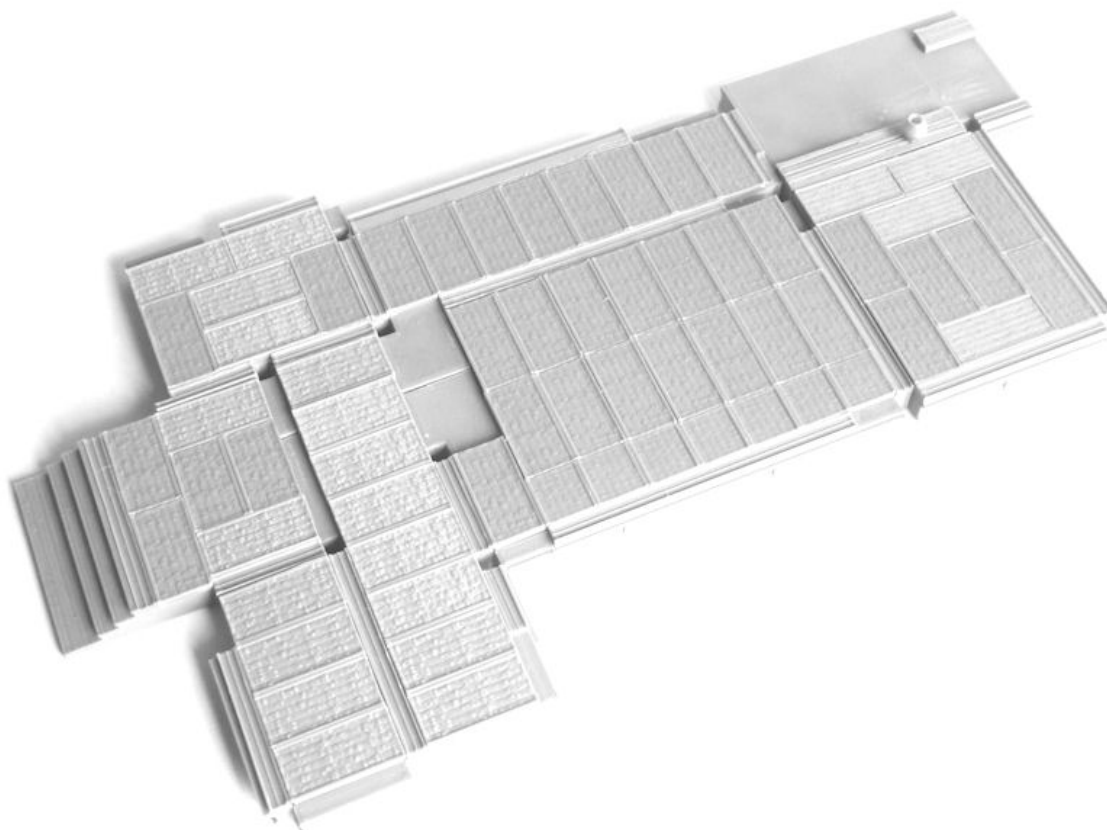


SAMURAI LORD'S HOUSE - MAIN HOUSE

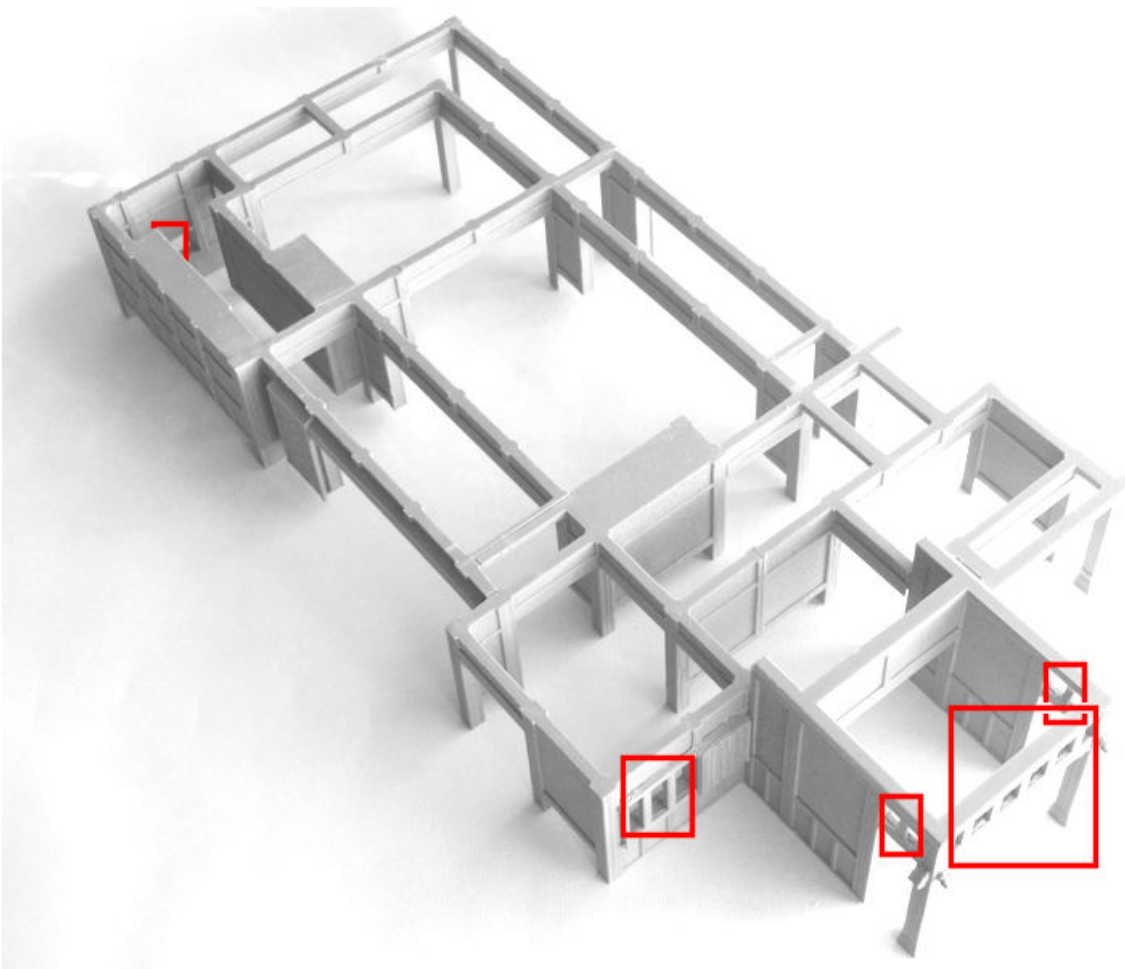
1. *House-baseA.STL*
House-baseB.STL
House-baseC.STL
House-baseD.STL
House-baseE.STL
House-baseF.STL
House-baseG.STL
House-entrance_tatami.STL



2. *House-doorways.STL*
Tatami.STL **x 51**
Tatami_halfsize.STL **x 7**



- 3. *House_partA.STL* (remove print supports, in red)
- House_partB.STL* (remove window print supports, in red)
- House_partC.STL*
- House_partD.STL*
- House_partE.STL*
- House_partF.STL* (remove window print support, in red)
- House_partG.STL*



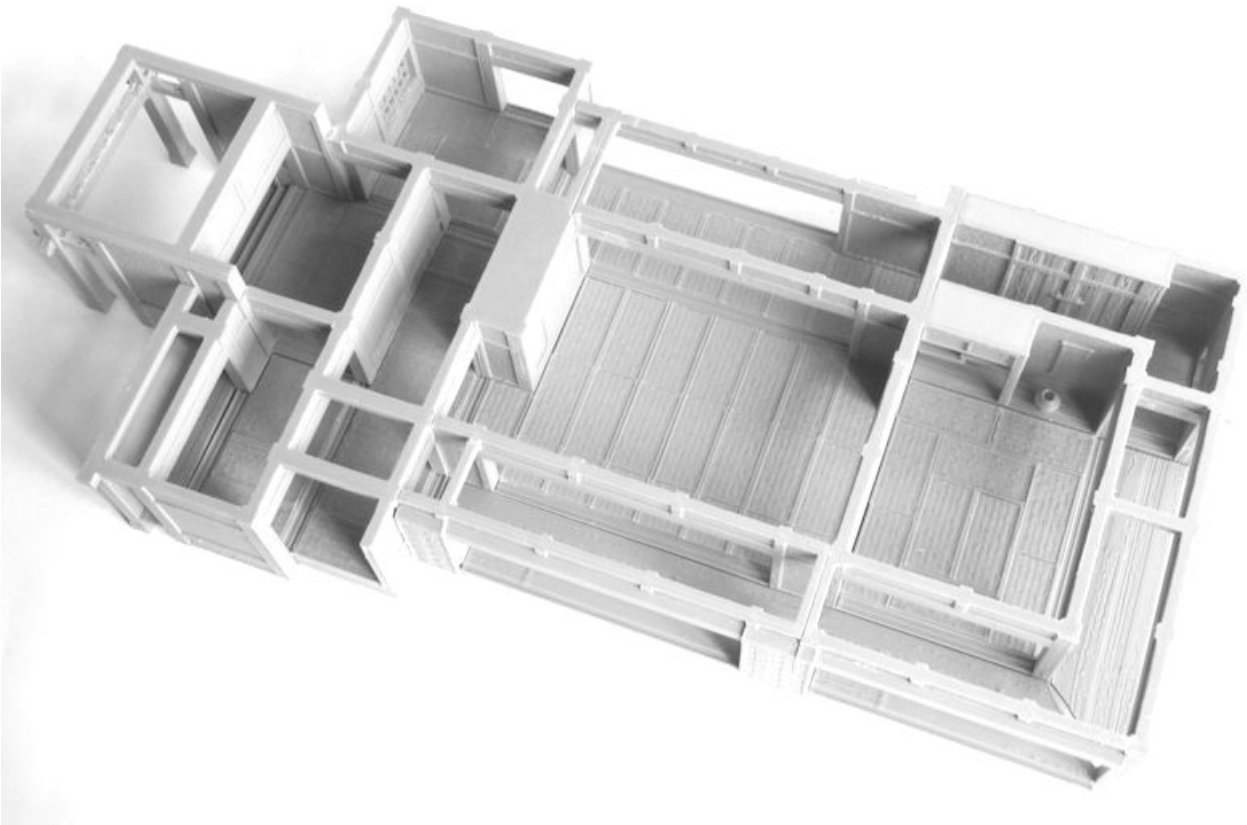
4. *House-floors.STL*

House-windows.STL

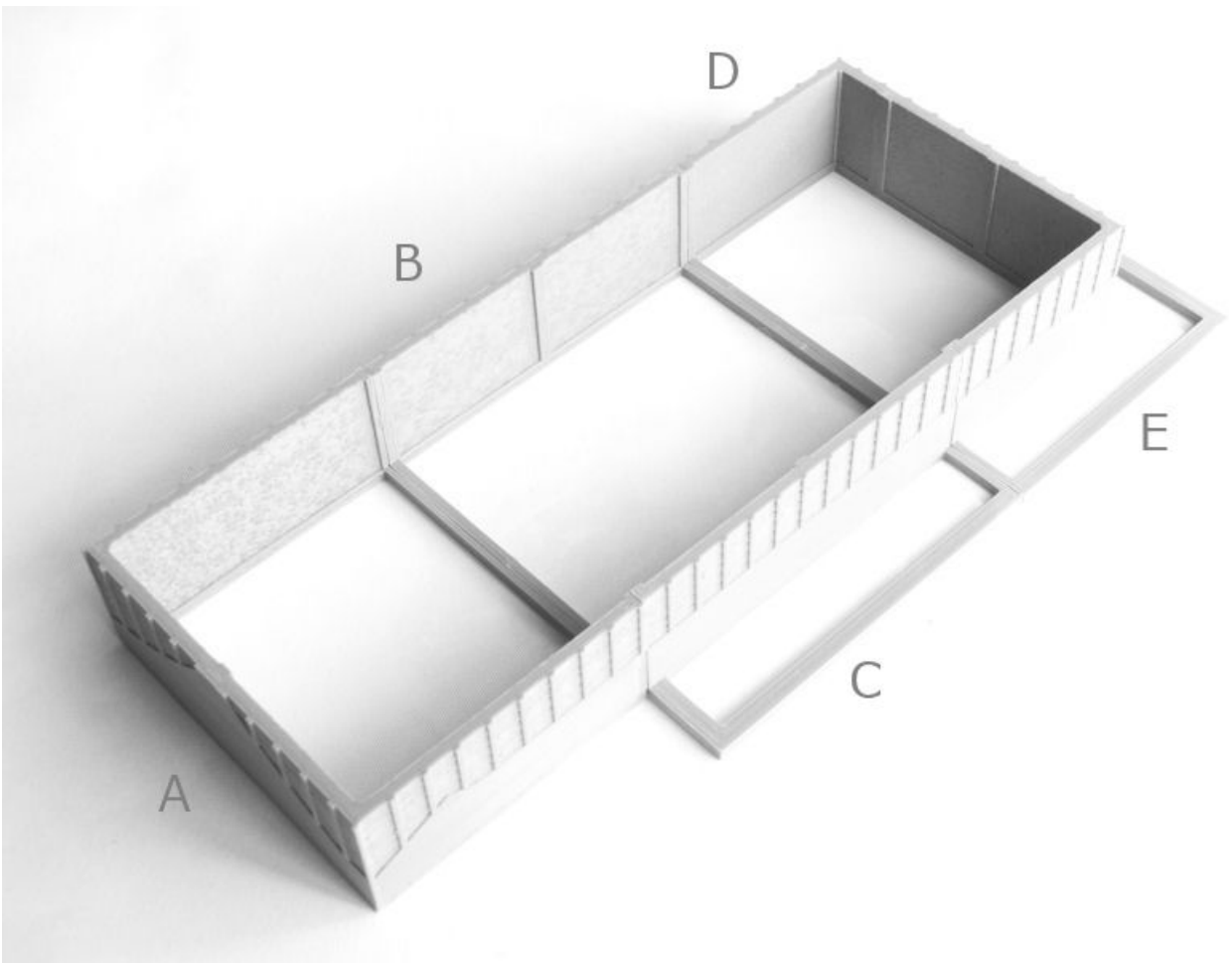
House-shelf.STL

House-door.STL (for the doorway behind the scroll)

House-doorway_for_standalone_building.STL (optional)



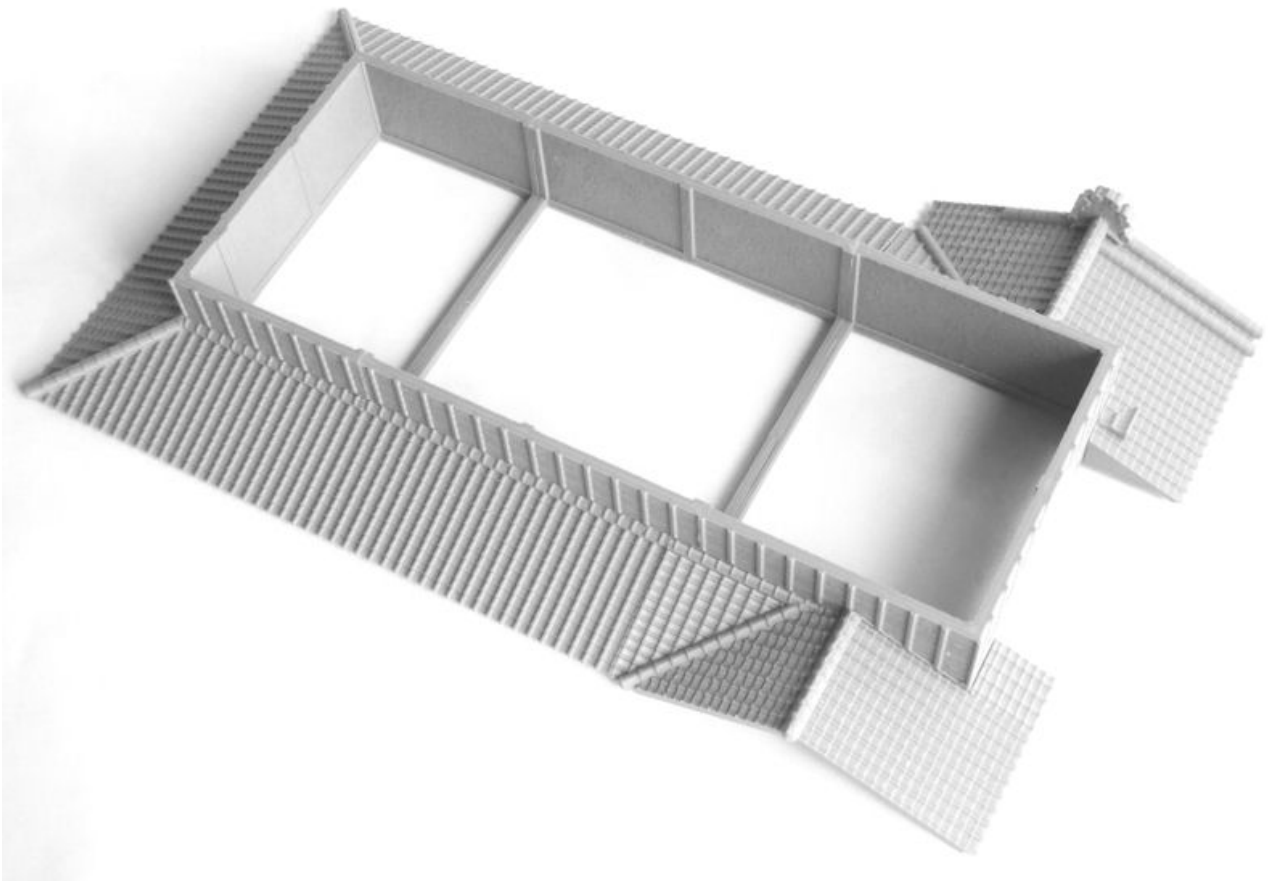
- 5. *House-upperA.STL*
- House-upperB.STL*
- House-upperC.STL*
- House-upperD.STL*
- House-upperE.STL*



6. *House-subroofA.STL* (or "_small_printers.STL" for smaller printers)
House-subroofB.STL (or "_small_printers.STL" for smaller printers)
House-subroofC.STL (or "_small_printers.STL" for smaller printers)

House-leftroof.STL

House-rightroof.STL (print supports required)



7. *House-frontroof.STL* (print supports required)

House-roofA.STL

House-roofB.STL

House-roofC.STL

House-roofD.STL

House-step.STL **x 4**

House-stepB.STL **x 2**

House-WoodDoor.STL **x up to 8** (optional)

House-ShojiDoor.STL **x up to 35** (optional)

House-ShutterDoor.STL **x up to 24** (optional)

