

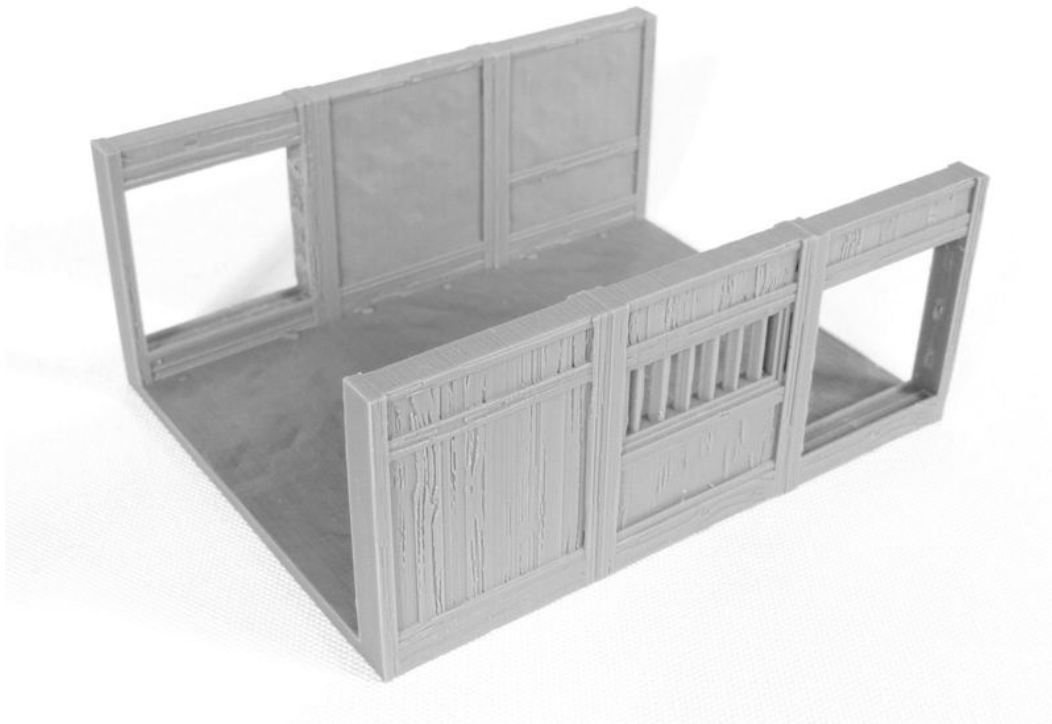


## SAMURAI MODULAR FARMHOUSES

Full assembly notes: <https://www.3dalienworlds.com/blog.php?BlogID=141>

### Example house:

- ① *Farm-wall\_wood\_doorway\_shoji.STL*  
*Farm-wall\_wood\_window\_barred.STL*  
*Farm-wall\_wood\_doorway.STL*



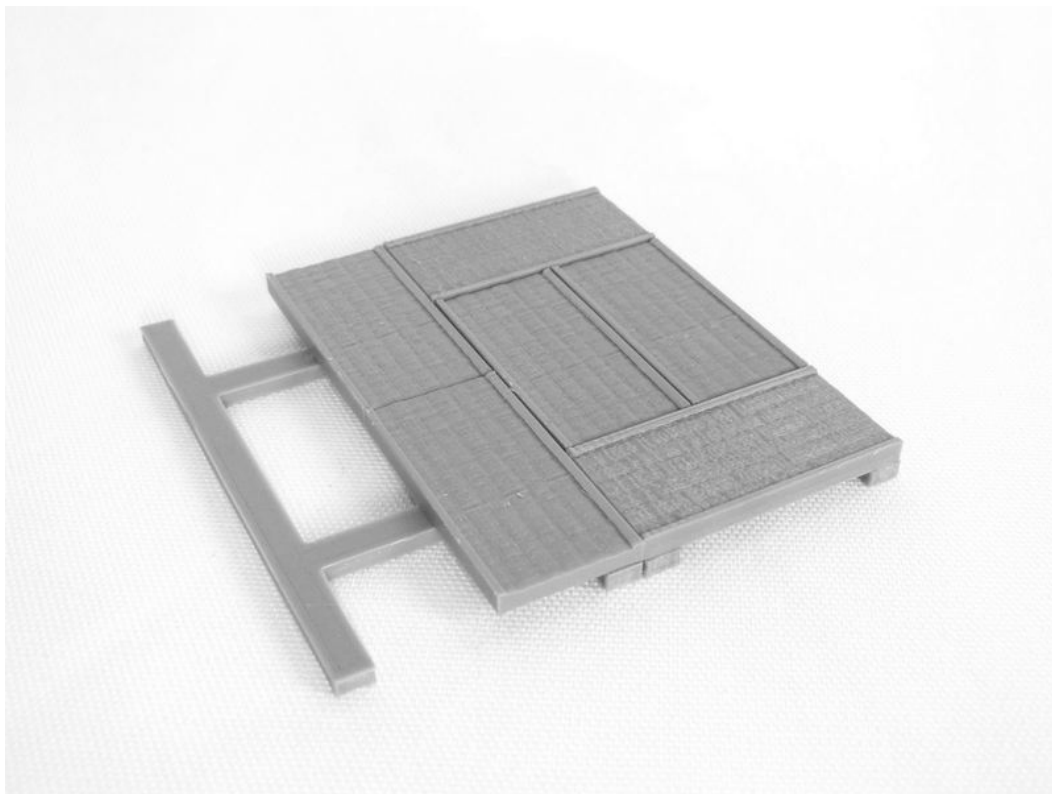
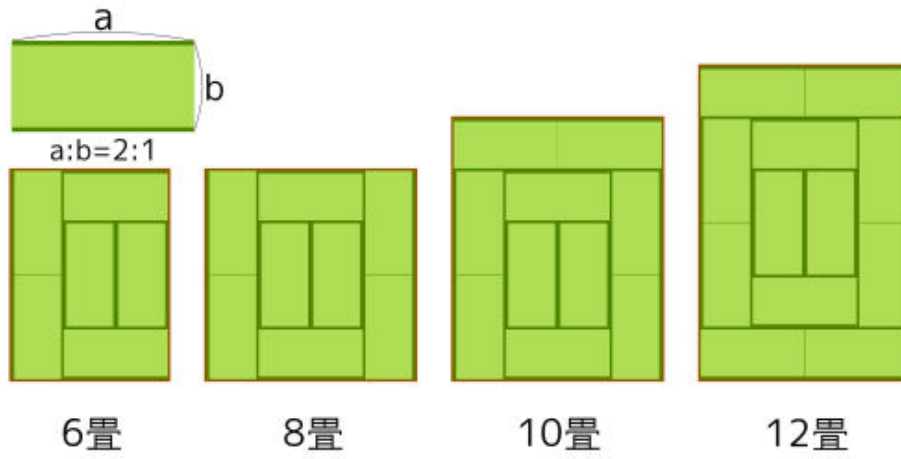
- ② *Farm-endwall\_wood\_solid.STL* x 2



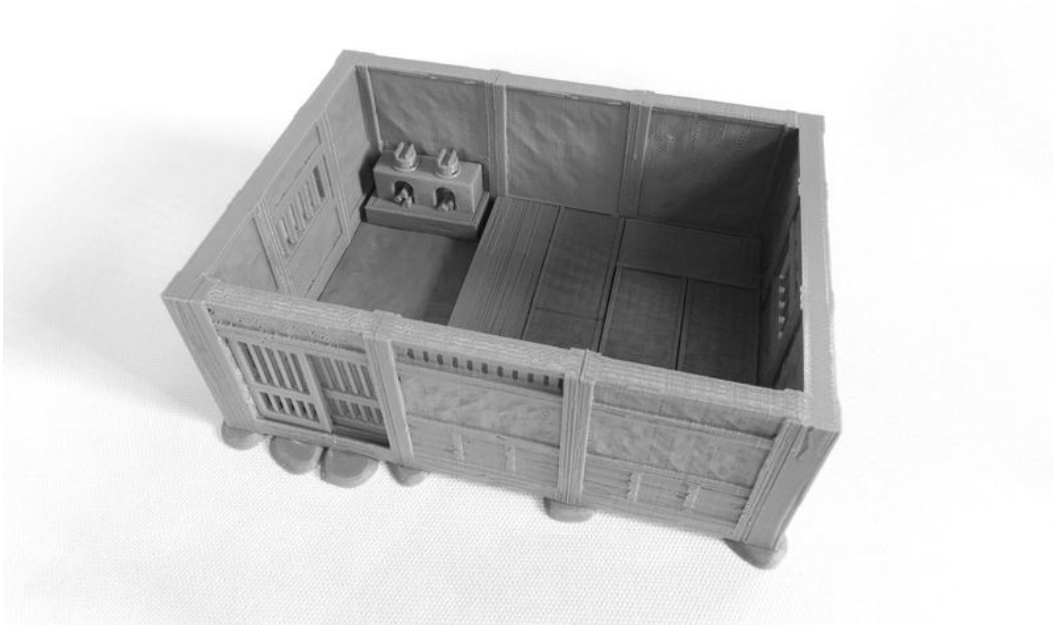
③ *Farm-stone.STL* x 14



- ④ *Farm-floor\_lifter.STL* x 2  
*Farm-floor\_tatami.STL* x 6  
*Farm-floor\_wood\_8x2.STL*



- ⑤ *Farm-door\_bars.STL* **x 2**  
*Farm-oven.STL*

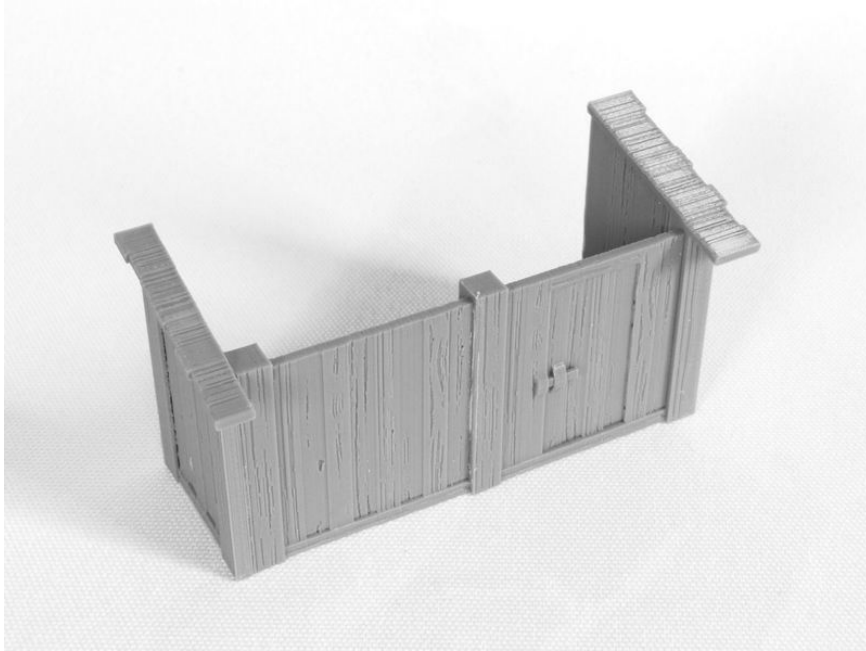


- ⑥ *Farm-roof\_thatch.STL* **x 2**  
*Farm-roof\_thatch\_end.STL* **x 2**  
*Farm-roof\_thatch\_wall\_mud.STL* **x 2**



## Shed:

- ⑦ *Farm-shed\_wall.STL*
- Farm-shed\_door.STL*
- Farm-shed\_end\_left.STL*
- Farm-shed\_end\_right.STL*



- ⑧ *Farm-balcony\_roof\_wood.STL* **x 2**

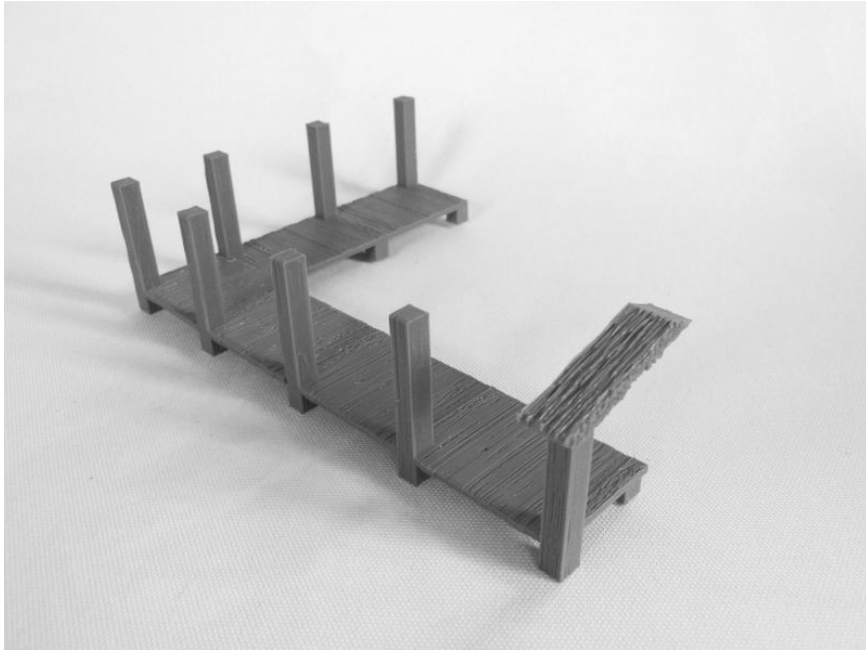


## Balcony corridor:

⑨ *Farm-balcony\_floor.STL* x 5

*Farm-balcony\_floor\_corner.STL*

*Farm-balcony\_end\_thatch\_under\_thatch.STL* (or ..."\_wood")



⑩ *Farm-balcony\_roof\_thatch\_under\_thatch.STL* x 5

*Farm-balcony\_roof\_thatch\_corner.STL*

*Farm-balcony\_endtrim\_thatch\_under\_thatch.STL*

