



SAMURAI CASTLE WALLS

Straight Section:

- ① *Castlewalls-straight.STL*
Castlewalls-straight_top.STL



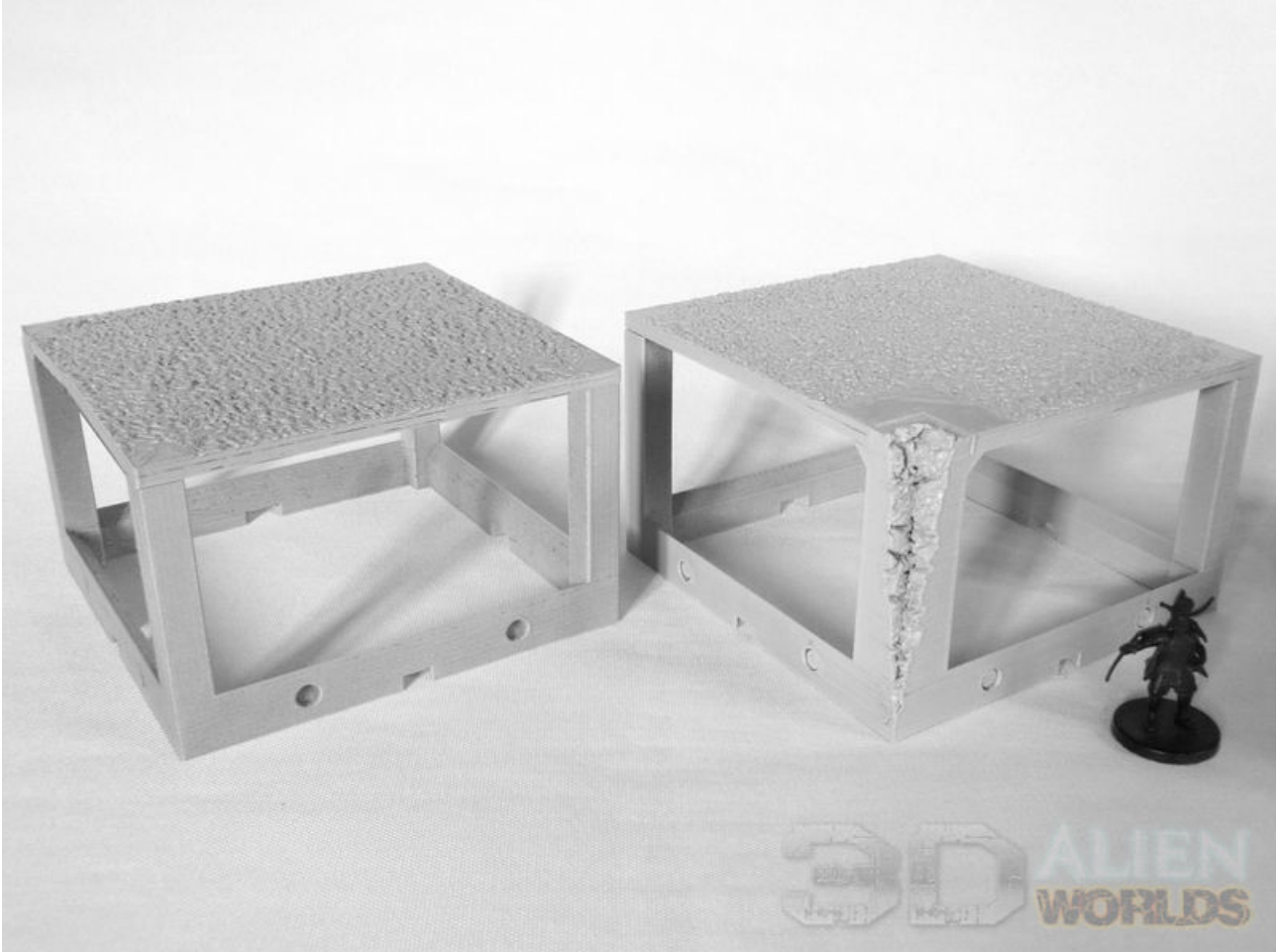
Corner Section:

- ② *Castlewalls-corner.STL*
Castlewalls-corner_top.STL

(tops are reversible upside-down)

Centre Section:

- ③ *Castlewalls-centre.STL*
Castlewalls-centre_top.STL



Inner Corner Section:

- ④ *Castlewalls-innercorner.STL*
Castlewalls-innercorner_top.STL

(tops are reversible upside-down)

Slope Section:

- ⑤ *Castlewalls-lowerslope.STL*
Castlewalls-upperslope.STL



Gateway:

- ⑥ *Castlewalls-gatepost_left.STL*
- Castlewalls-gatepost_right.STL*
- Castlewalls-gate_left.STL*
- Castlewalls-gate_right.STL*
- Castlewalls-gate_beam.STL*
- Castlewalls-gate_lockbar.STL*

