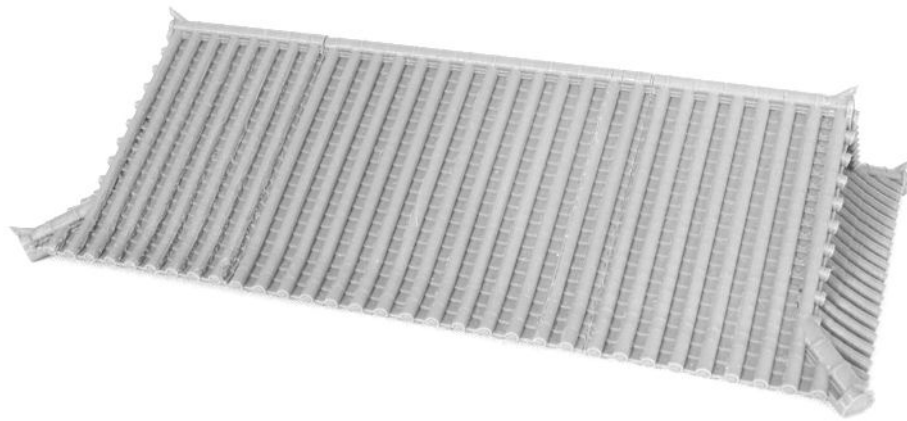


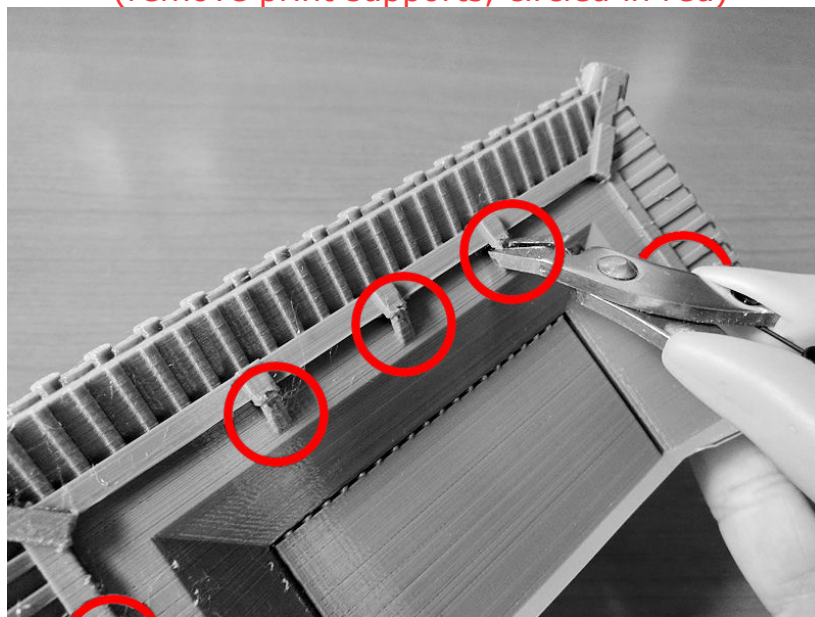


SAMURAI CASTLE GATETOWER

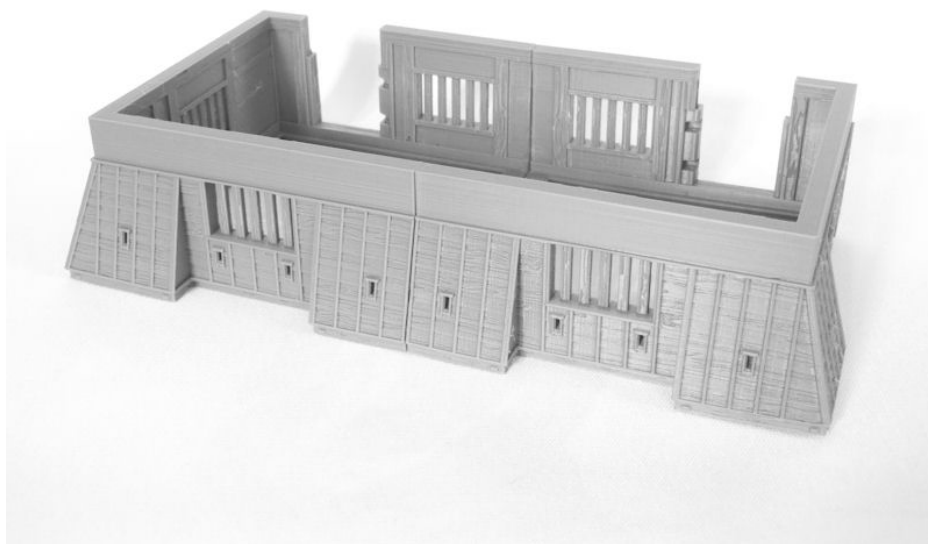
1. *GateTower-roof.STL*
GateTower-roof_end.STL **x2**



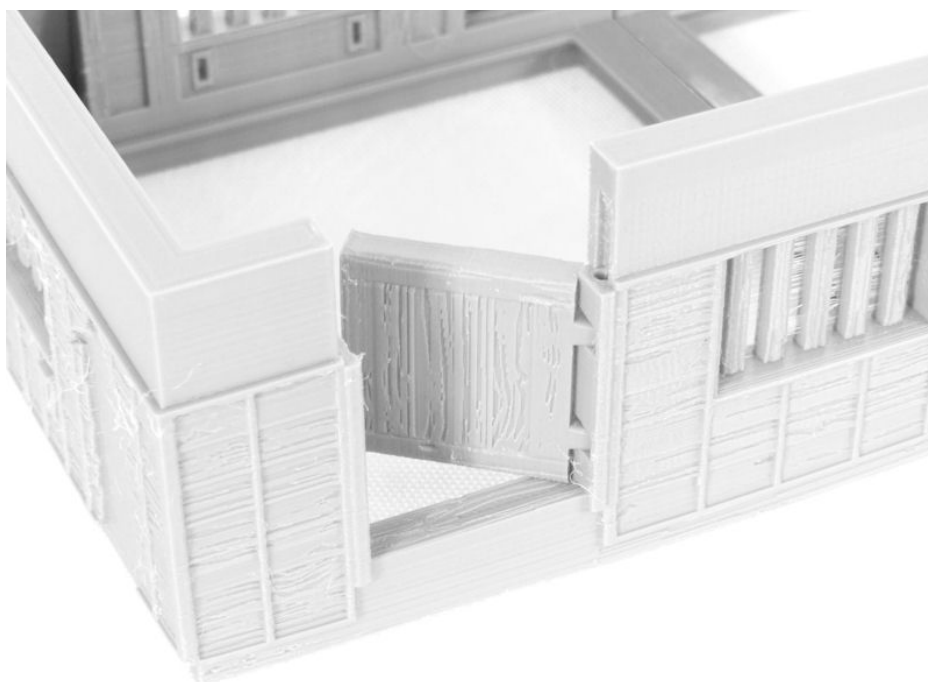
(remove print supports, circled in red)



2. *GateTower-left.STL*
GateTower-right.STL

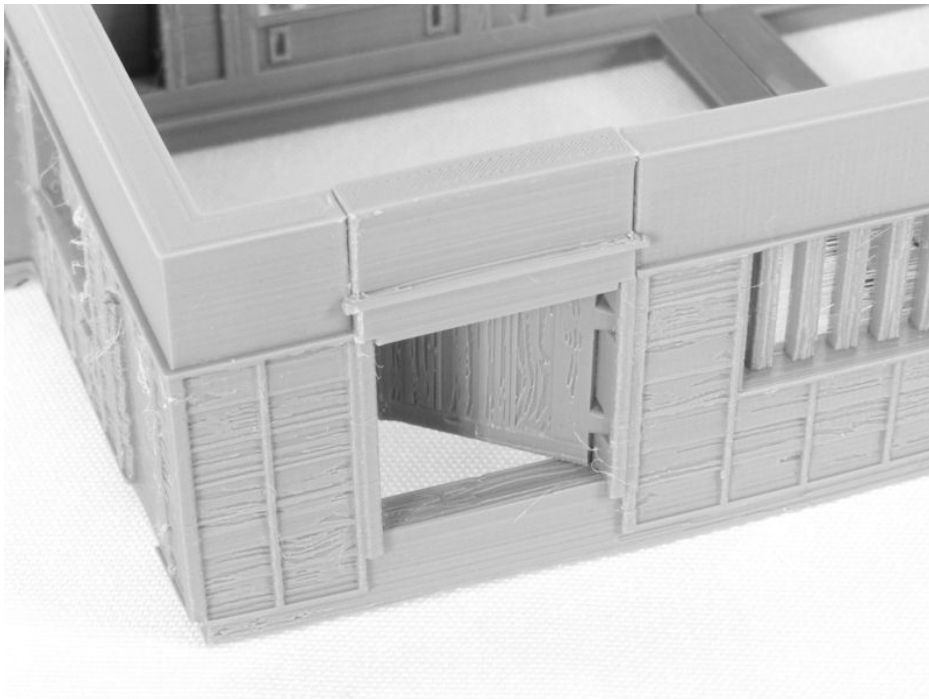


3. *GateTower-door.STL* **x2**

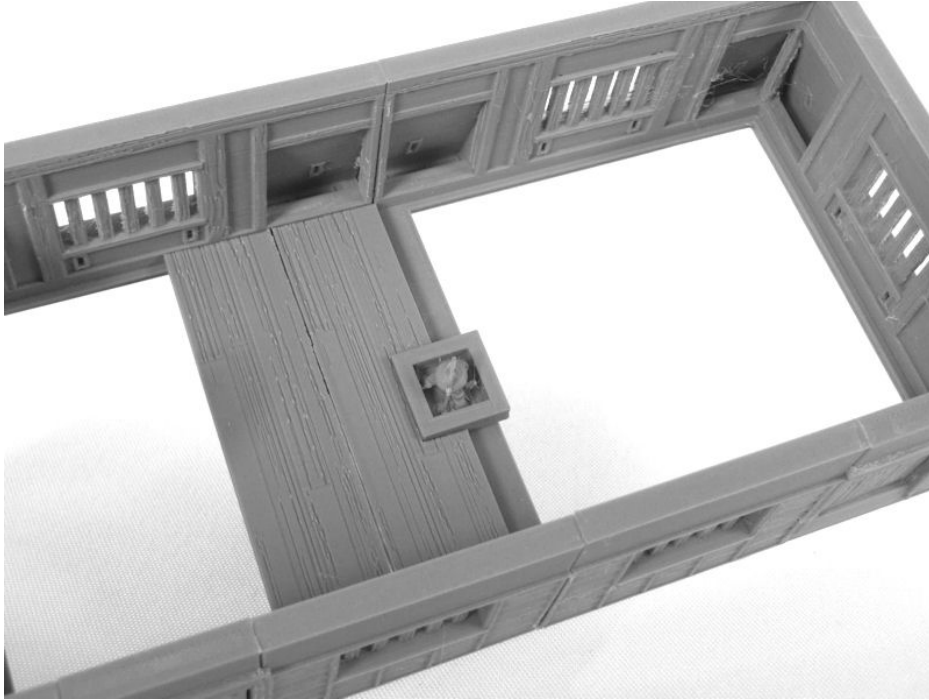




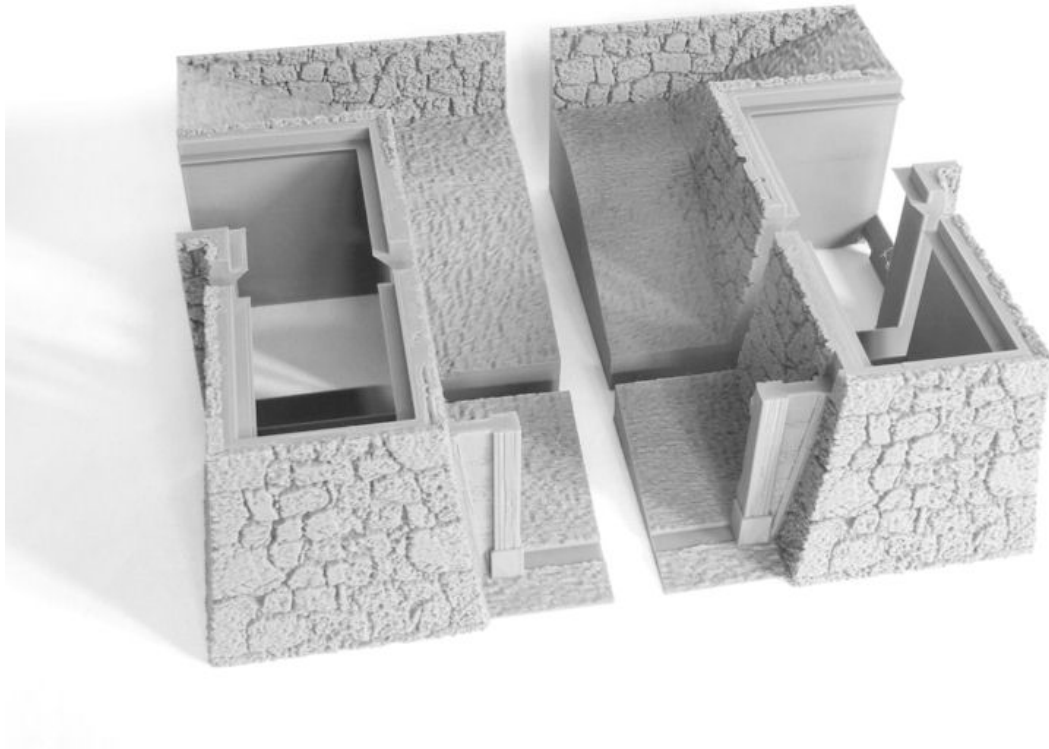
4. *GateTower-door_top.STL* **x2**



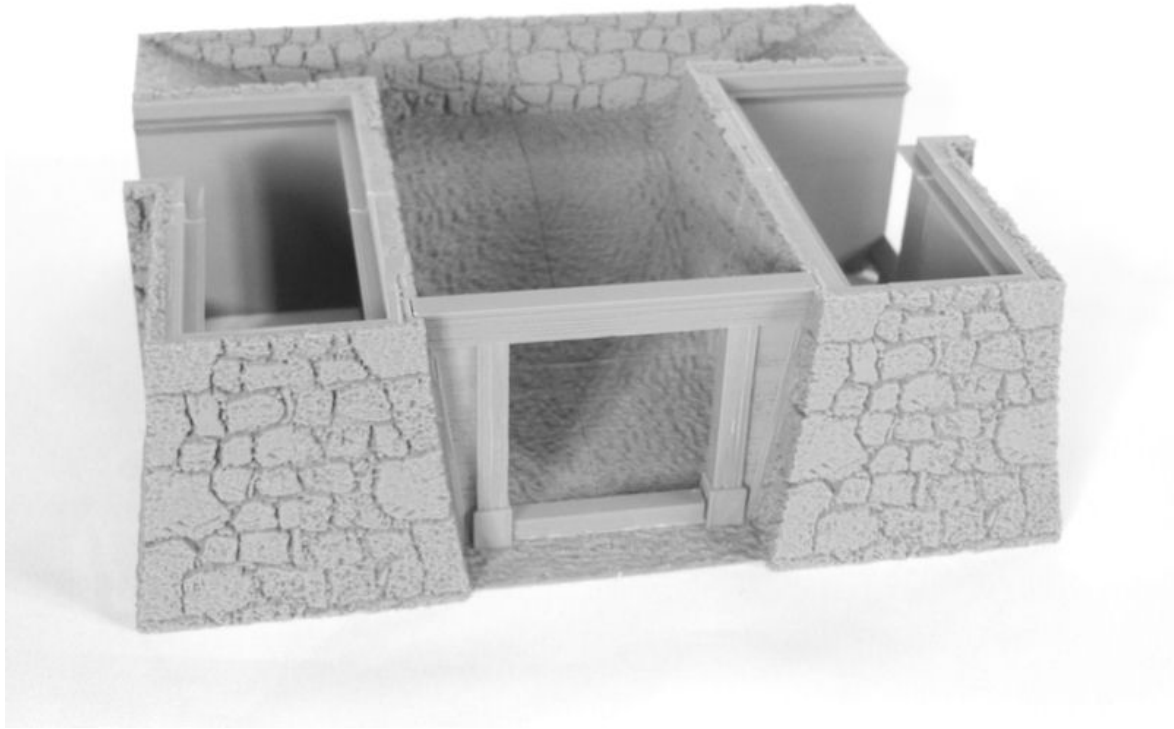
5. *GateTower-irori.STL*
GateTower-floor_firepit.STL **x2**
GateTower-floor.STL **x6**



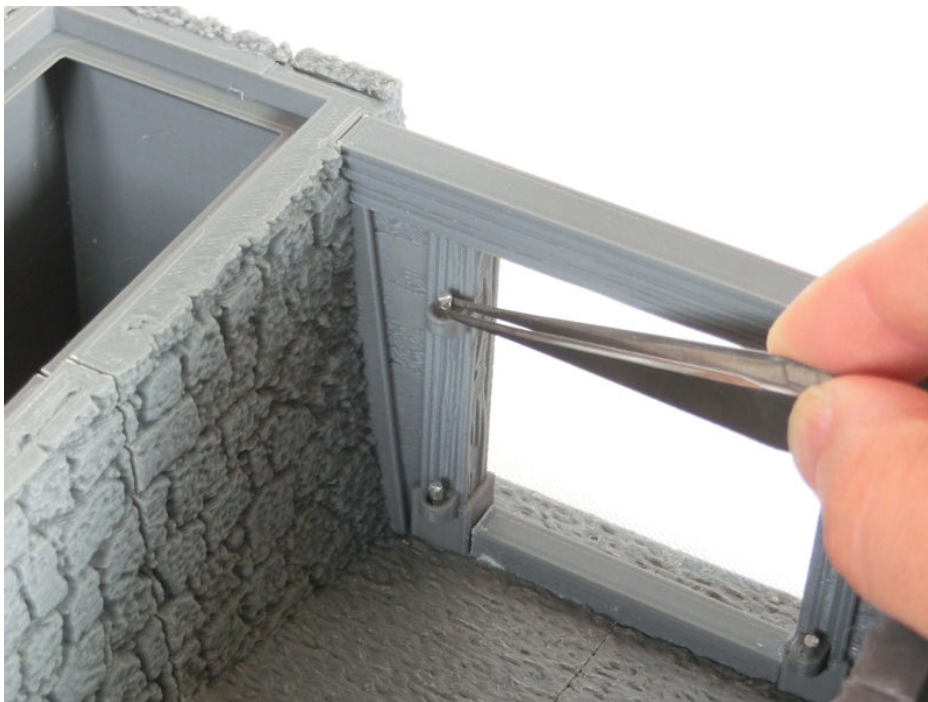
- 6. *GateTower-base1.STL*
- GateTower-base2.STL*
- GateTower-base3.STL*
- GateTower-base4.STL*



7. GateTower-gate_top.STL
GateTower-gate_bottom.STL



8. 1~2mm diameter rod or filament **x4**

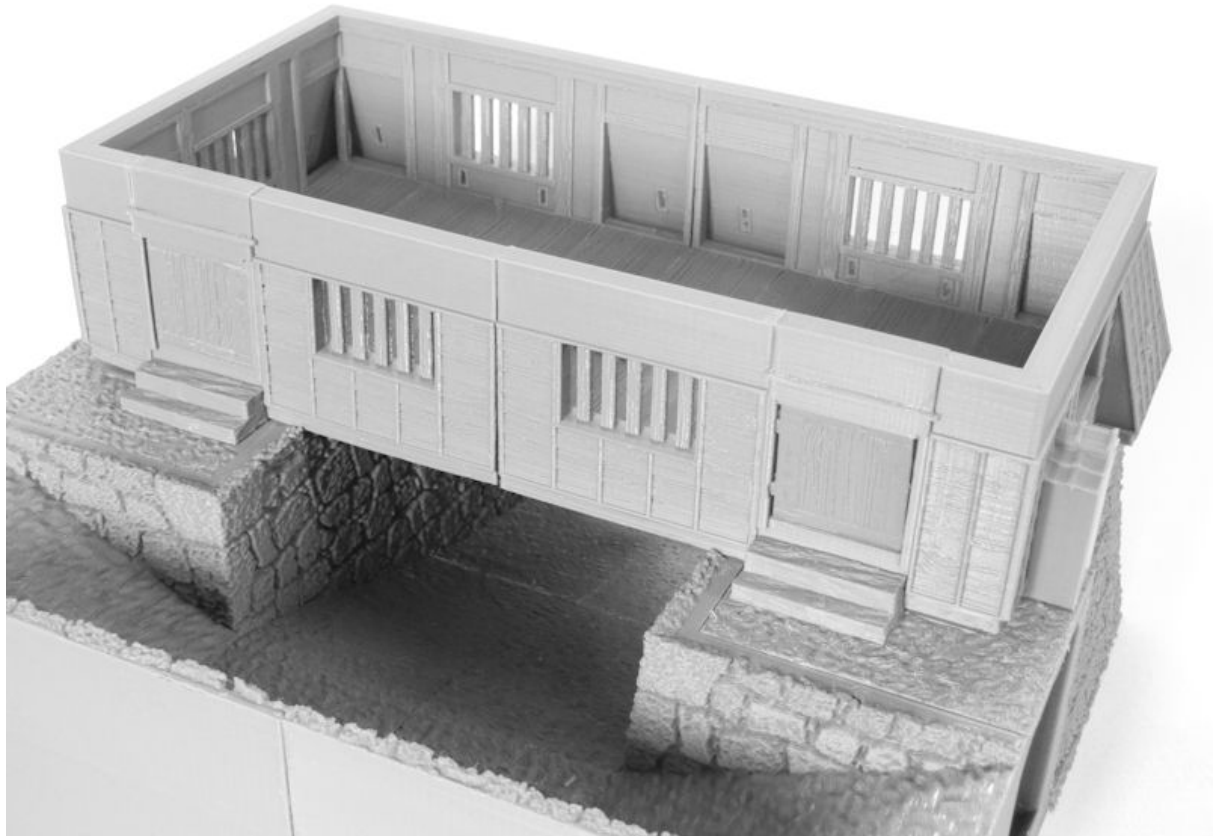


9. *GateTower-gateleft.STL* (**OR** *...gateleft_symbol.STL*)
GateTower-gateright.STL (**OR** *...gateright_symbol.STL*)
GateTower-gate_lockbar.STL

GateTower-base_floor.STL **x2**
GateTower-base_floor_texturedL.STL
GateTower-base_floor_texturedR.STL



10. *GateTower-steps.STL* **x2**
GateTower-wall_left.STL
GateTower-wall_right.STL



11. *GateTower-shutter.STL* **x12** (optional)
GateTower-shutter_stick.STL **x12** (optional)