



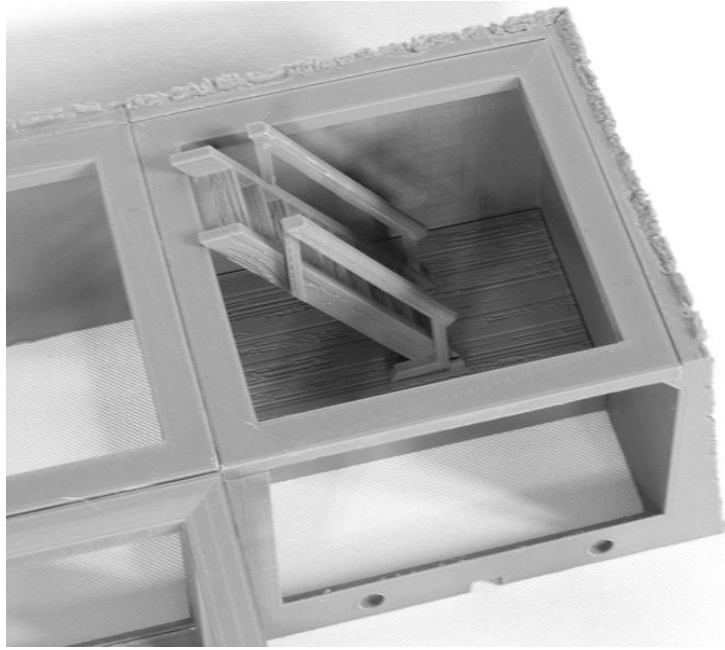
SAMURAI CASTLE

Base Level: (for underground entrance version)

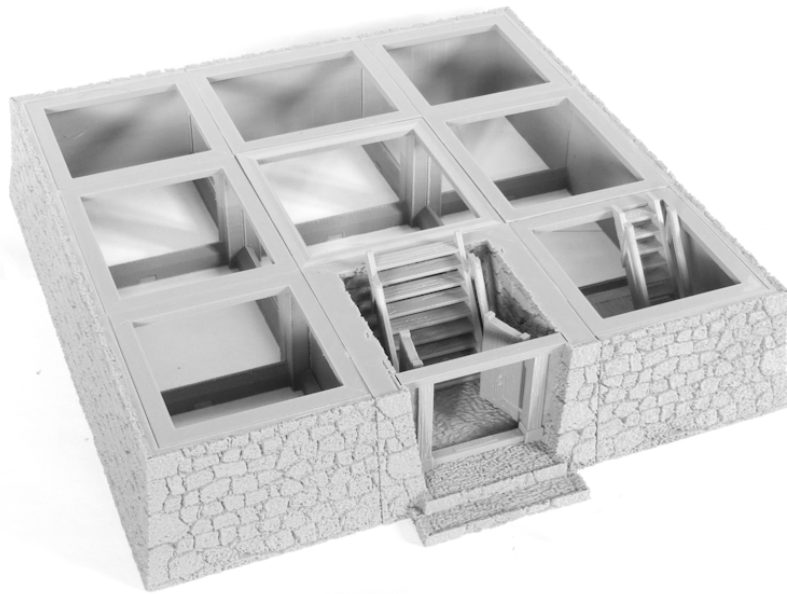
1. *Castlewalls-corner.STL* **x 4**
Castlewalls-corner_top_frame.STL **x 4**
Castlewalls-straight.STL **x 3**
Castlewalls-straight_top_frame.STL **x 3**
Castlewalls-centre.STL
Castlewalls-centre_top_frame.STL
Clips.STL **x 2**



2. *Castle-0F_stairs.STL*
Castle-0F_stairs_base.STL
Castle-0F_stair_railings.STL



3. *Castle-0F_gateway.STL*
Castle-0F_mainstairs.STL
Castle-0F_mainstair_railings.STL
Castle-0F_beam.STL
Castle-0F_gateleft.STL
Castle-0F_gateright.STL
Castle-0F_gateway_roof.STL (optional part, supports required)



(underground entrance version)

Level 1:

- 4. *Castle-1F_corner.STL* **x 4**
- Castle-1F_support_corner.STL* **x 4**
- Castle-1F_straight.STL* **x 3**
- Castle-1F_support_straight.STL* **x 3**
- Castle-1F_centre.STL*



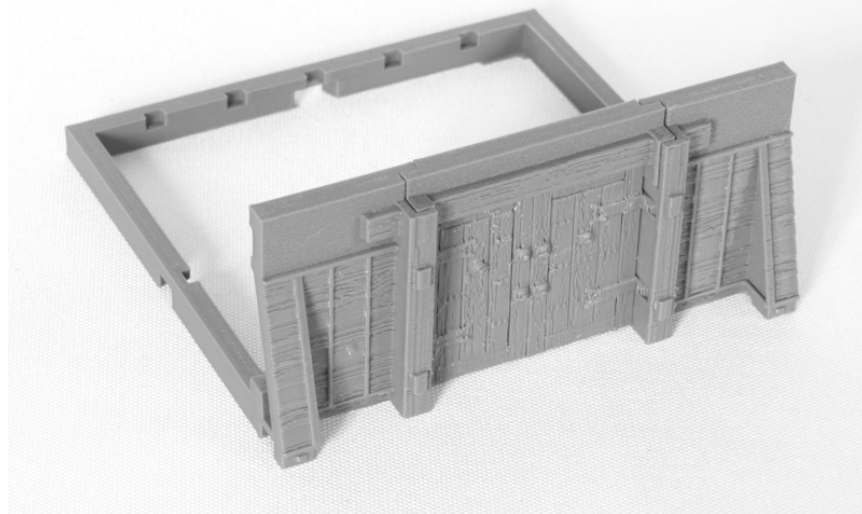
- 5. *Castle-1F_straight.STL* **(for underground entrance)**
- Castle-1F_support_steps.STL*

OR

- Castle-1F_doorway.STL* **(for ground level door)**
- Castle-1F_doors.STL*
- Castle-1F_door_beam.STL* (supports required)
- Castle-1F_support_straight.STL*



(underground entrance version)



(ground level door version)

- 6. *Castle-1F_floor_wide.STL* **x 3**
- Castle-1F_floor_wide_steps.STL*
- Castle-1F_floor_narrow.STL* **x 4**
- Castle-1F_floor_centre.STL* **(x 2 for ground level door)**
- Castle-1F_floor_centre_steps.STL* **(for underground entrance)**



(underground entrance version)

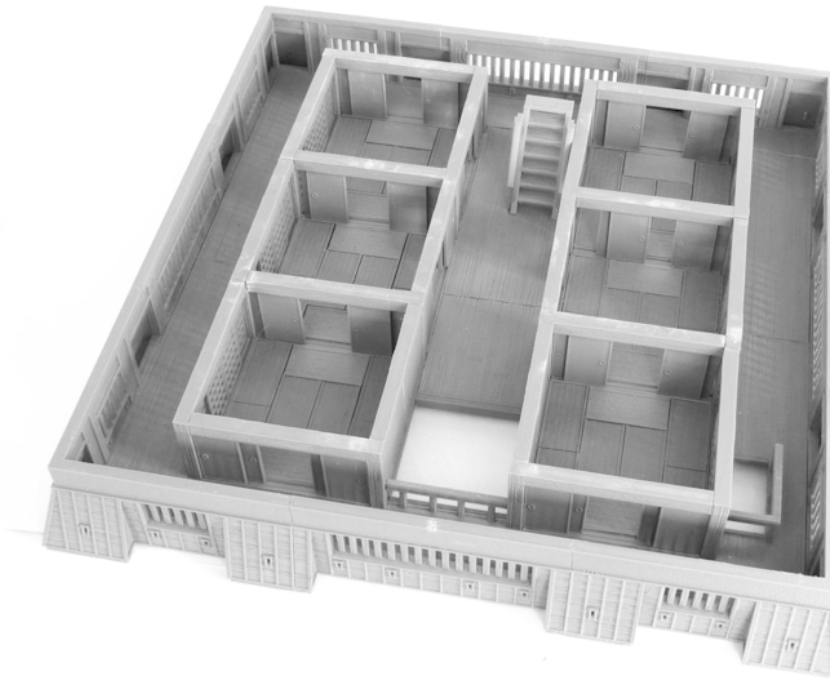
7. *Castle-tatami.STL* **x 48**
Castle-1F_innerwall.STL **x 2**
Castle-1F_doorframe.STL **x 16**
Castle-1F_doorframe_bottom.STL **x 18**
Castle-1F_doorframe_top.STL **x 2**



(underground entrance version)

8. *Castle-1F_stairs.STL*
Castle-1F_stair_railings.STL
Castle-screendoor.STL **x 48**
Castle-paperdoor.STL **x 24**

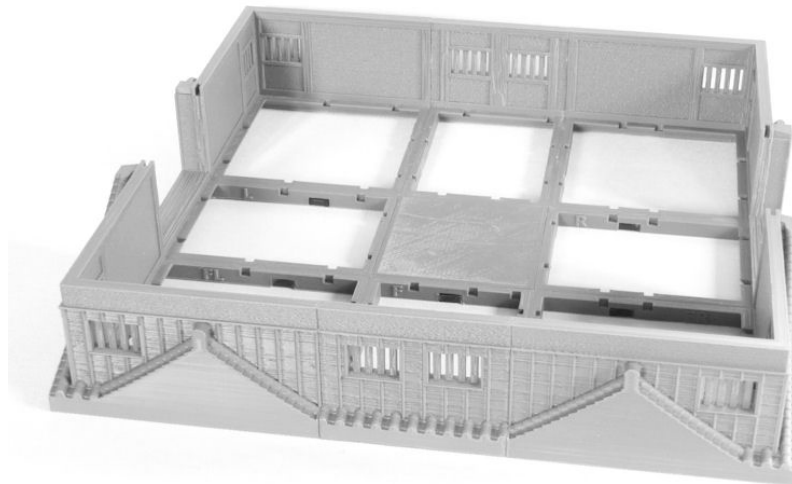
Castle-1F_railings.STL **(for underground entrance version)**



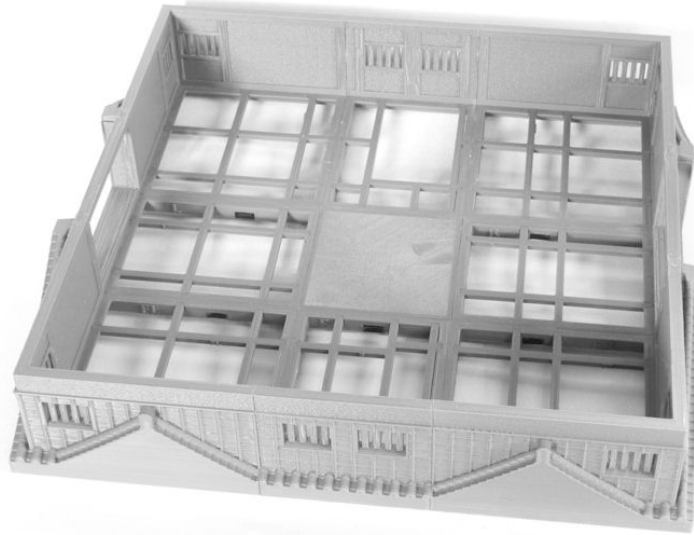
(underground entrance version)

Level 2:

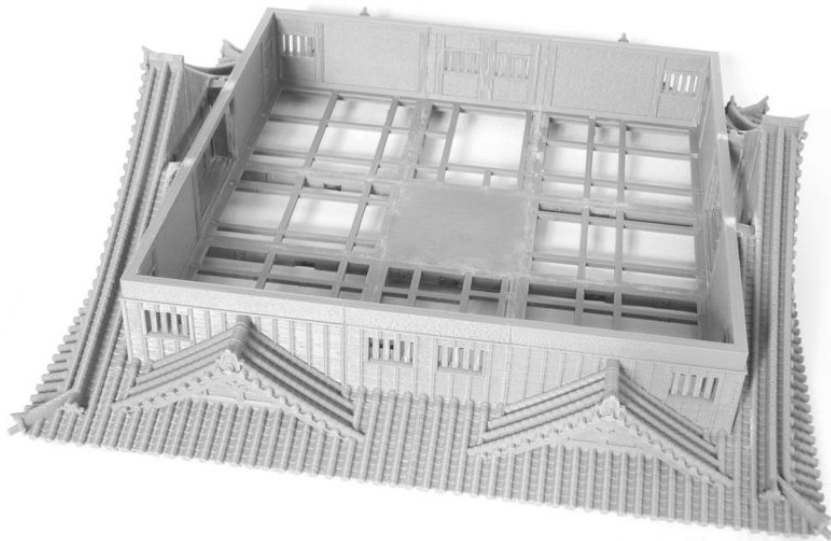
- 9. *Castle-2F_frontright.STL* (labelled "FR")
- Castle-2F_front.STL* (labelled "F")
- Castle-2F_frontright.STL* (labelled "FR")
- Castle-2F_left.STL* (labelled "L")
- Castle-2F_centre.STL*
- Castle-2F_right.STL* (labelled "R")
- Castle-2F_backleft.STL* (labelled "BL")
- Castle-2F_back.STL* (labelled "B")
- Castle-2F_backright.STL* (labelled "BR")



- 10. *Castle-2F_support_frontright.STL* (labelled "FR")
- Castle-2F_support_front.STL* (labelled "F")
- Castle-2F_support_frontright.STL* (labelled "FR")
- Castle-2F_support_left.STL* (labelled "L")
- Castle-2F_support_right.STL* (labelled "R")
- Castle-2F_support_backleft.STL* (labelled "BL")
- Castle-2F_support_back.STL* (labelled "B")
- Castle-2F_support_backright.STL* (labelled "BR")
- Castle-2F_beams.STL*



11. *Castle-2F_left2.STL* **x 2** (supports recommended)
Castle-2F_left3.STL **x 2**
Castle-2F_right2.STL **x 2** (supports recommended)
Castle-2F_right3.STL **x 2**



12. *Castle-2F_floor1.STL*
Castle-2F_floor2.STL **x 2**
Castle-2F_floor3.STL



13. *Castle-2F_wall1_combined.STL* (for larger printers)

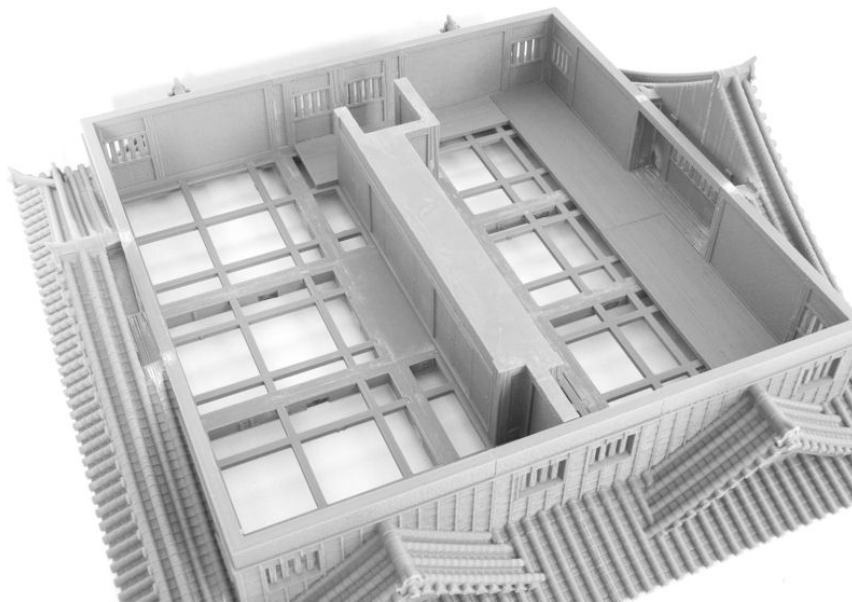
OR

Castle-2F_wall1_part1.STL (for smaller printers)

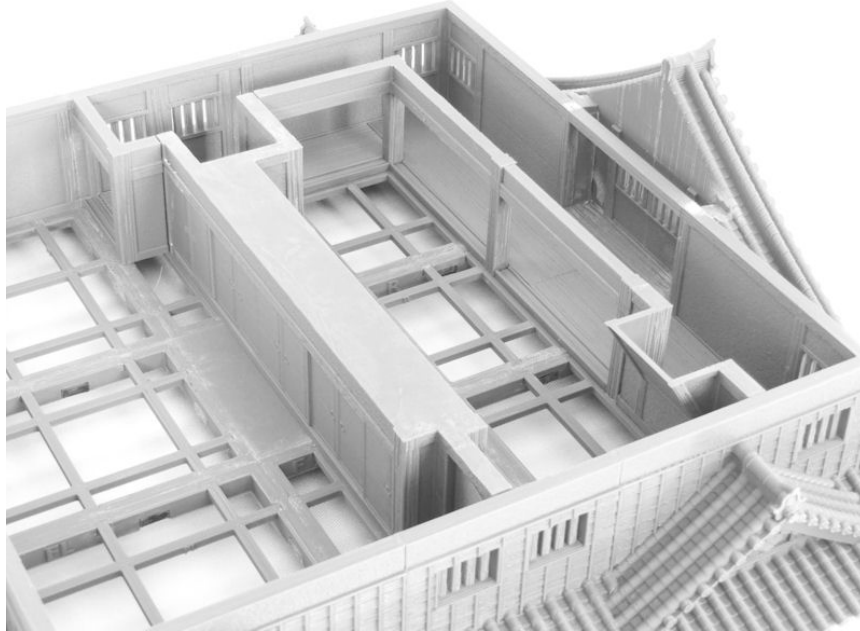
Castle-2F_wall1_part2.STL

Castle-2F_secretdoor.STL

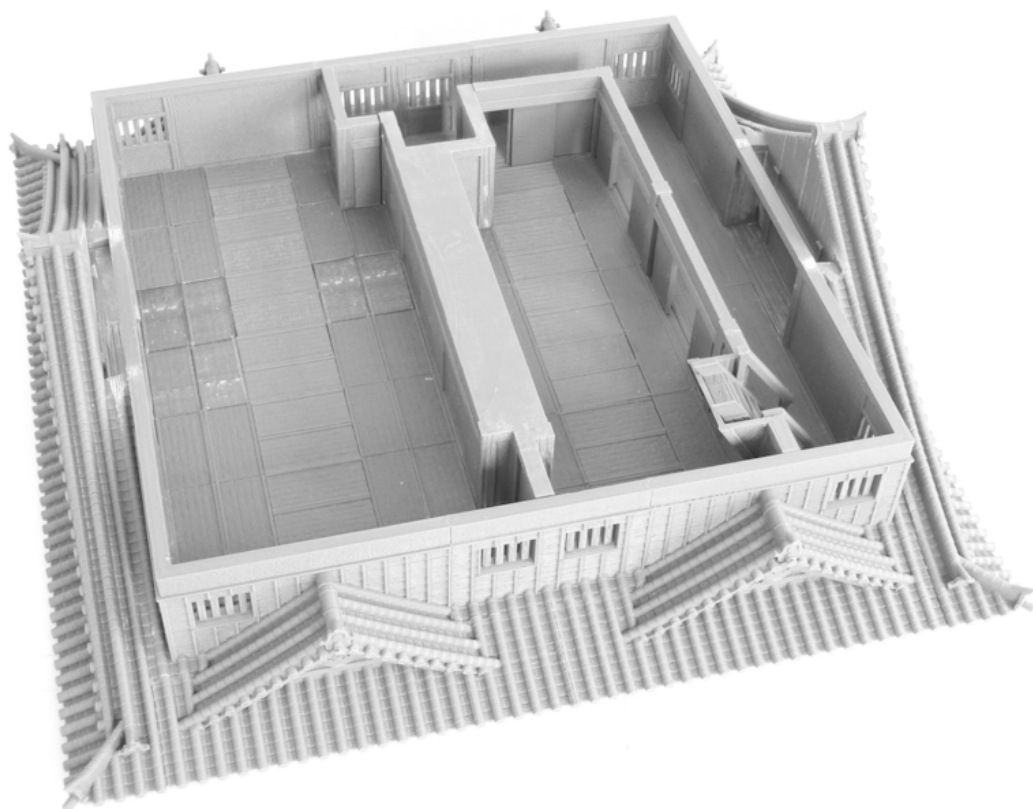
Castle-2F_secretdoorbase.STL



14. *Castle-2F_wall2.STL*
Castle-2F_wall3.STL
Castle-2F_wall4.STL
Castle-2F_wall5.STL
Castle-2F_doorways.STL

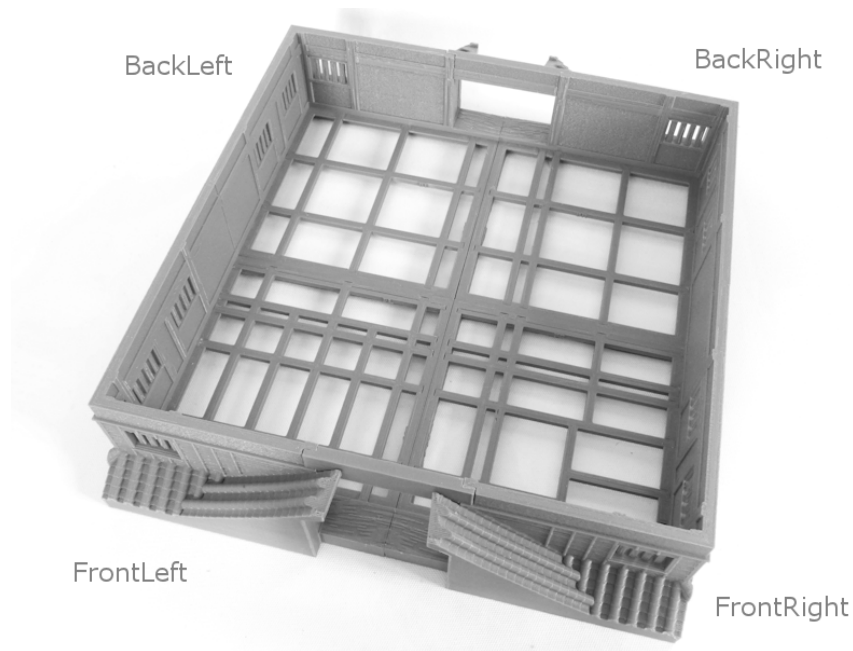


15. *Castle-screendoor.STL* **x 13**
Castle-tatami.STL **x 60**
Castle-2F_railing.STL
Castle-2F_stairs.STL
Castle-2F_stair_railings.STL

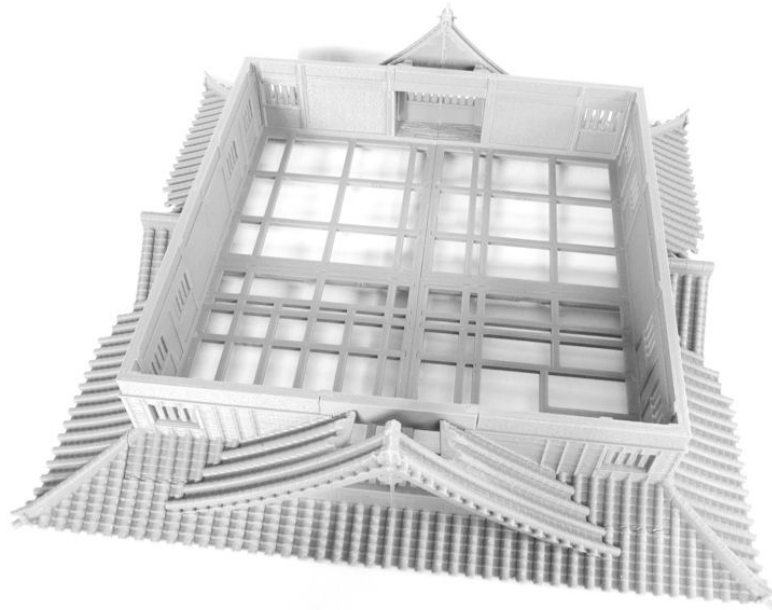


Level 3:

16. *Castle-3F_frontleft.STL* (labelled "FL")
Castle-3F_frontright.STL (labelled "FR")
Castle-3F_backleft.STL (labelled "BL")
Castle-3F_backright.STL (labelled "BR")
Castle-3F_beams.STL
17. *Castle-3F_support_frontleft.STL* (labelled "FL")
Castle-3F_support_frontright.STL (labelled "FR")
Castle-3F_support_backleft.STL (labelled "BL")
Castle-3F_support_backright.STL (labelled "BR")



18. *Castle-3F_left2.STL* **x 2**
Castle-3F_left3.STL **x 2**
Castle-3F_right2.STL **x 2**
Castle-3F_right3.STL **x 2**



19. *Castle-3F_floor.STL*

Castle-3F_walls_combined.STL (for larger printers)

OR

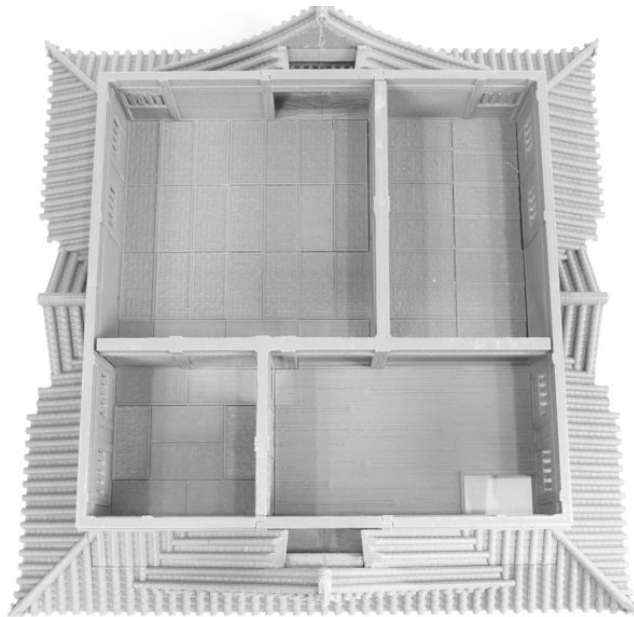
Castle-3F_walls_part1.STL (for smaller printers)

Castle-3F_walls_part2.STL

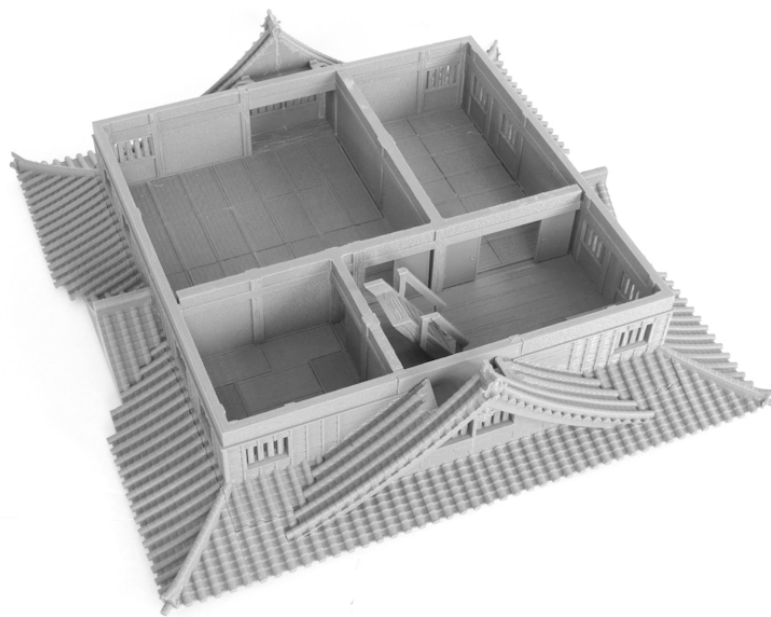
Castle-3F_walls_part3.STL



20. *Castle-3F_doorways.STL*
Castle-tatami.STL **x 46**
Castle-tatami_halfsize.STL

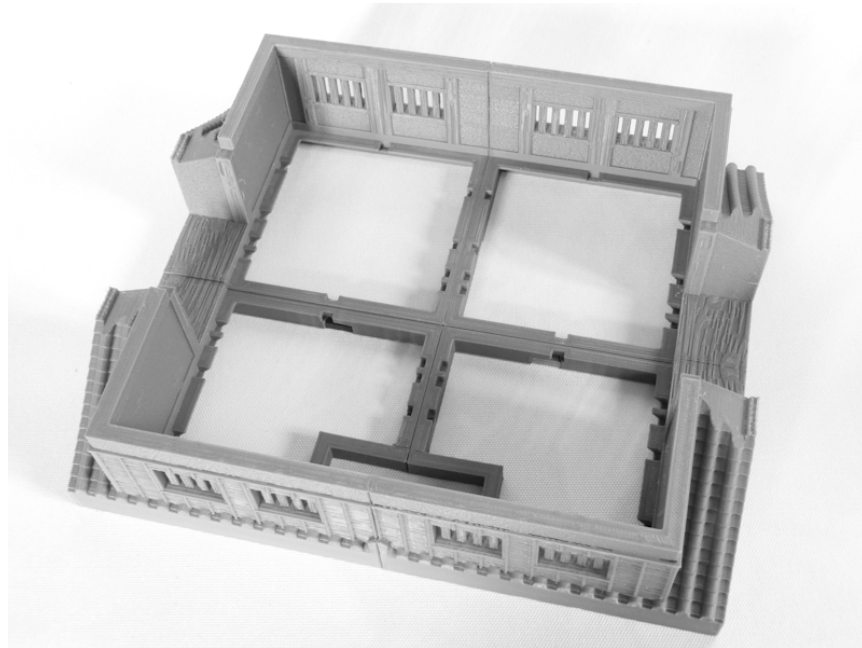


21. *Castle-3F_stairs.STL*
Castle-3F_stair_railings.STL
Castle-3F_railing.STL
Castle-screendoor.STL **x 7**

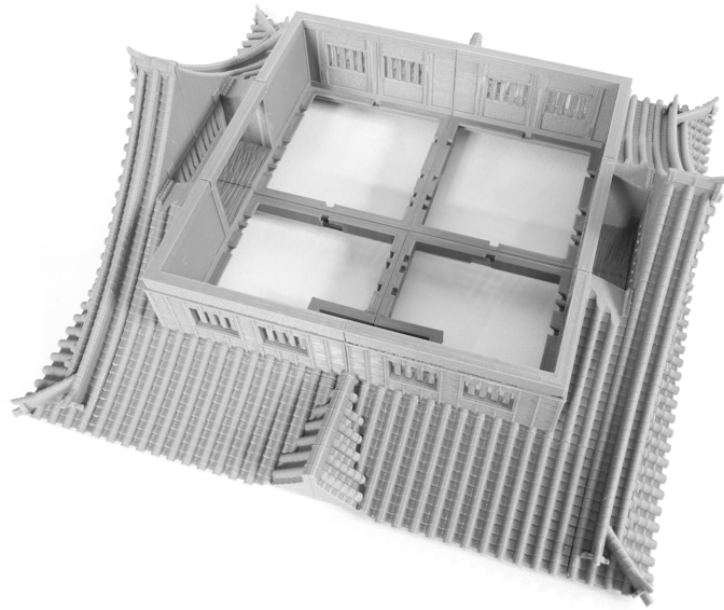


Level 4:

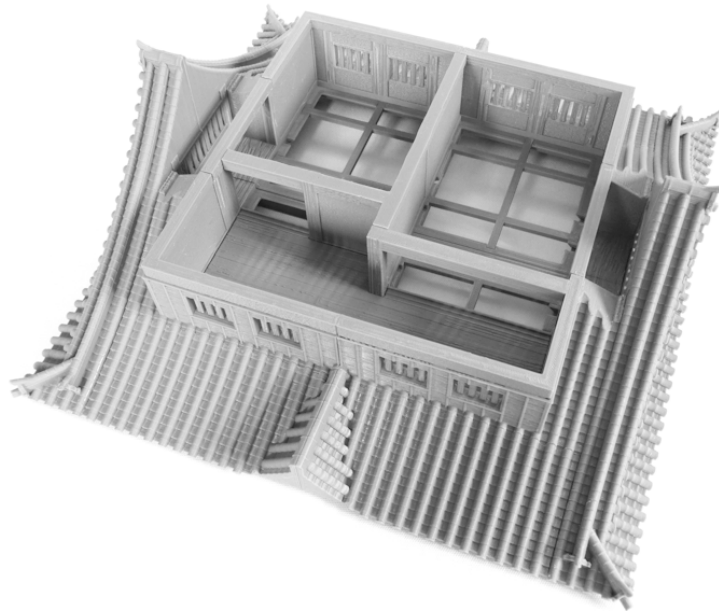
- 22. *Castle-4F_frontright.STL*
- Castle-4F_frontright.STL*
- Castle-4F_backleft.STL*
- Castle-4F_backright.STL*



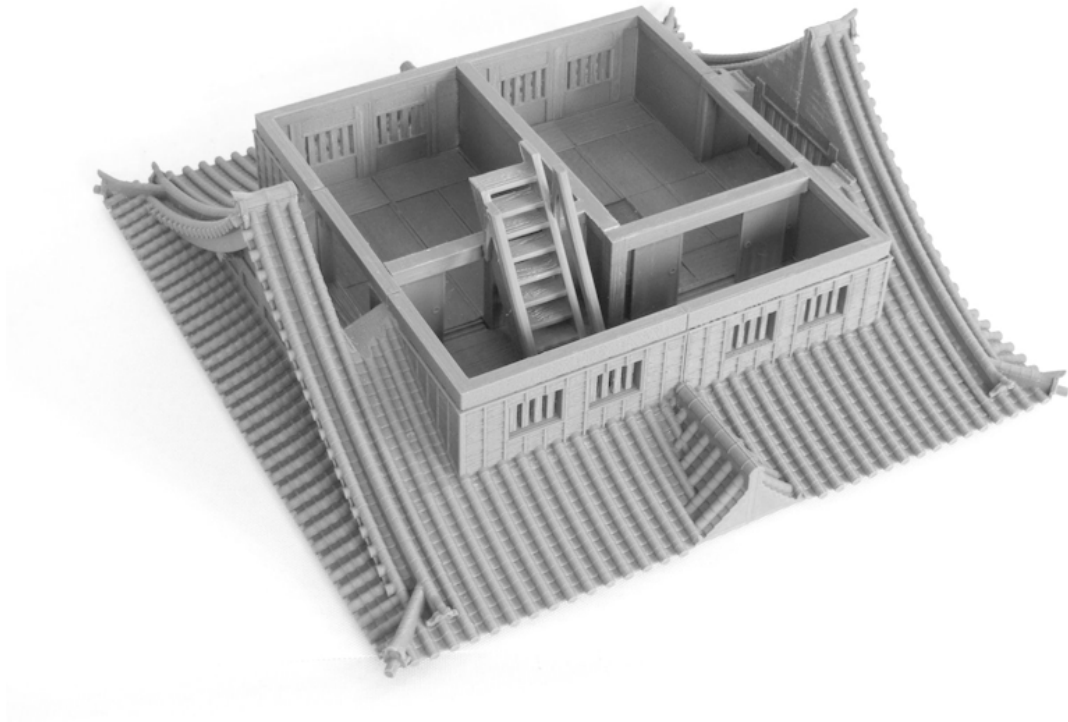
- 23. *Castle-4F_left2.STL* **x 2** (supports recommended)
- Castle-4F_left3.STL* **x 2**
- Castle-4F_right2.STL* **x 2** (supports recommended)
- Castle-4F_right3.STL* **x 2**
- Castle-4F_beams.STL*



24. *Castle-4F_supports.STL* **x 2**
Castle-4F_floor.STL (supports required)
Castle-4F_doorways.STL
Castle-4F_walls.STL

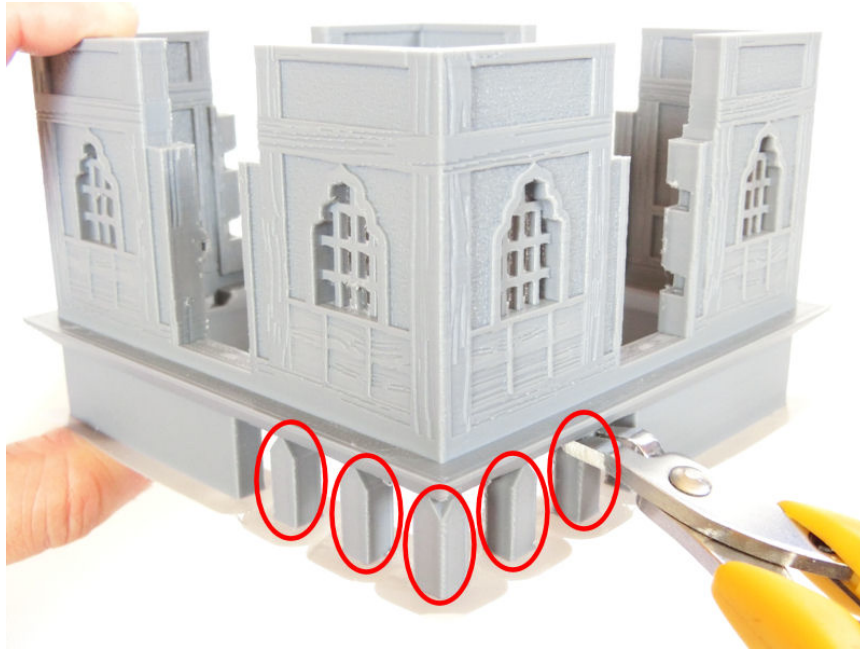


25. *Castle-4F_stairs.STL*
Castle-4F_stair_railings.STL
Castle-4F_railings.STL
Castle-tatami.STL **x 22**
Castle-screendoor.STL **x 6**

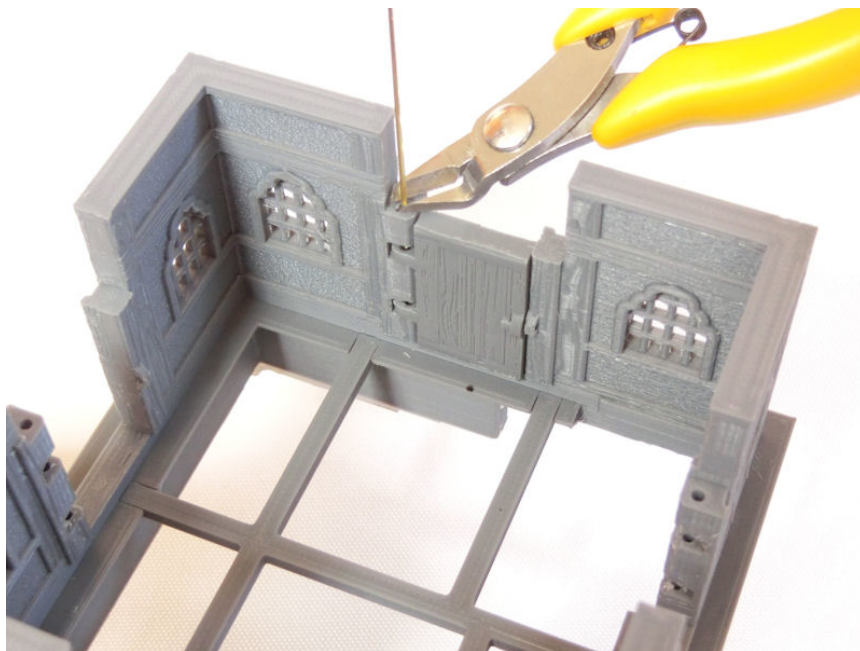


Level 5:

26. *Castle-5F.STL* (remove print supports, in red)



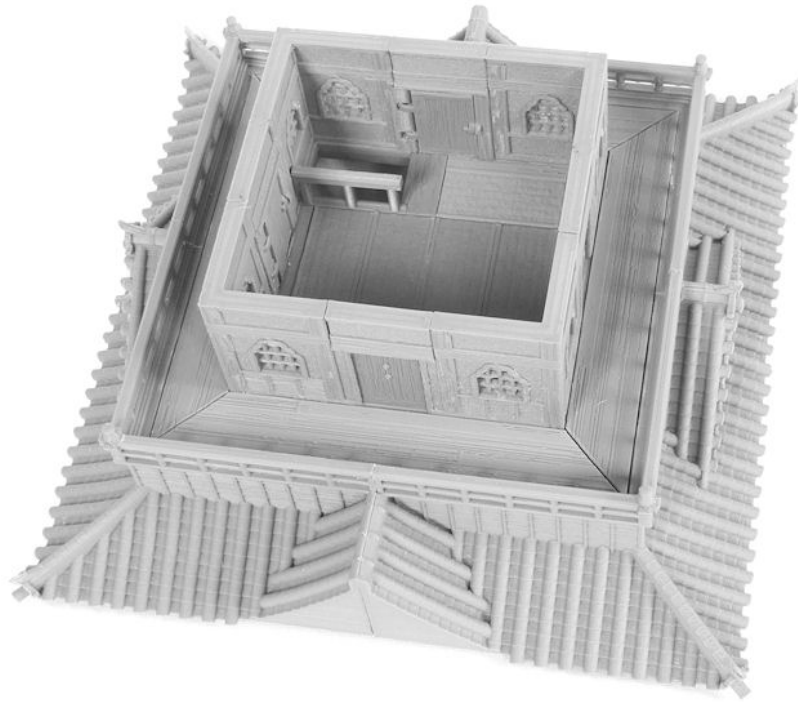
27. *Castle-5F_door.STL* **x 4**
Castle-5F_door_top.STL **x 4**
Castle-5F_support.STL



28. *Castle-5F_floor_edging.STL*
Castle-tatami.STL **x 7**
Castle-5F_railing.STL



29. *Castle-5F_left.STL* **x 2** (supports required)
Castle-5F_right.STL **x 2** (supports required)
Castle-5F_floor_balcony.STL **x 4**
Castle-5F_knobs.STL



30. *Castle-5F_roof.STL* **x 2**
Castle-5F_dragonfish.STL **x 2**

