



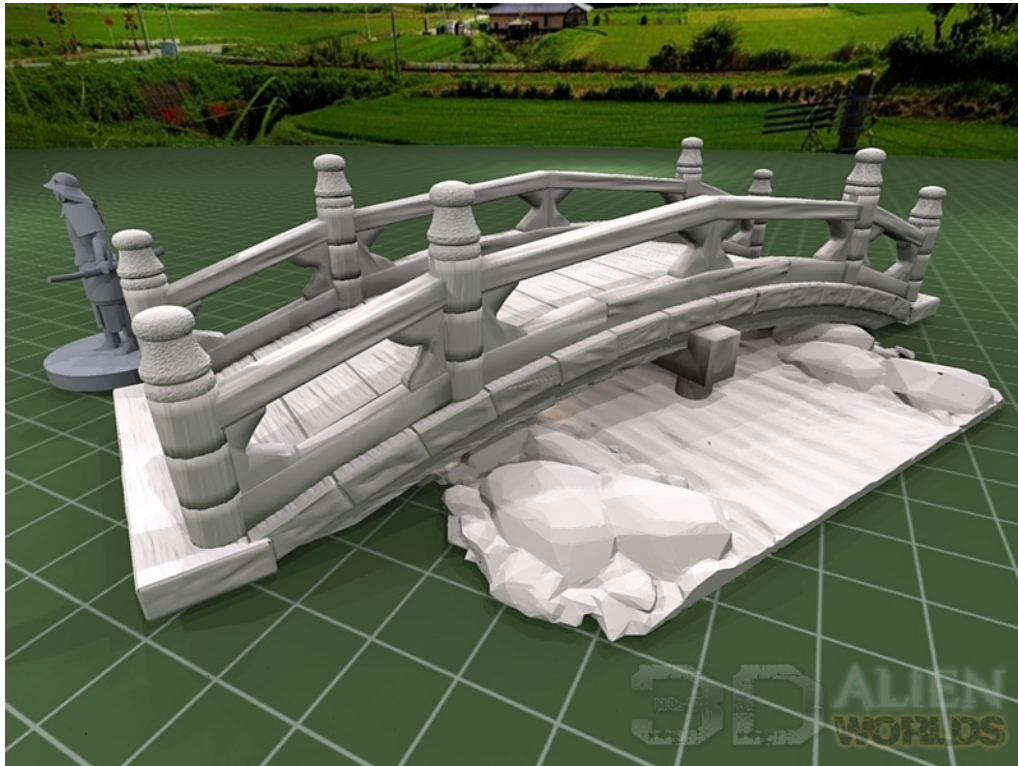
SAMURAI BRIDGES

Stone Bridge :

- ① *StoneBridge-main.STL* **x2**
StoneBridge-knob.STL **x8**

Optional support(s) - cut to desired height:

- StoneBridge-leg.STL* **x2**
StoneBridge-support.STL



Wooden Bridge :

- ② *WoodBridge-main.STL* **x2**
WoodBridge-knob.STL **x6**

Optional support(s) - cut to desired height:

- WoodBridge-endcap.STL* **x2**
- WoodBridge-support1.STL*
- WoodBridge-support2.STL*

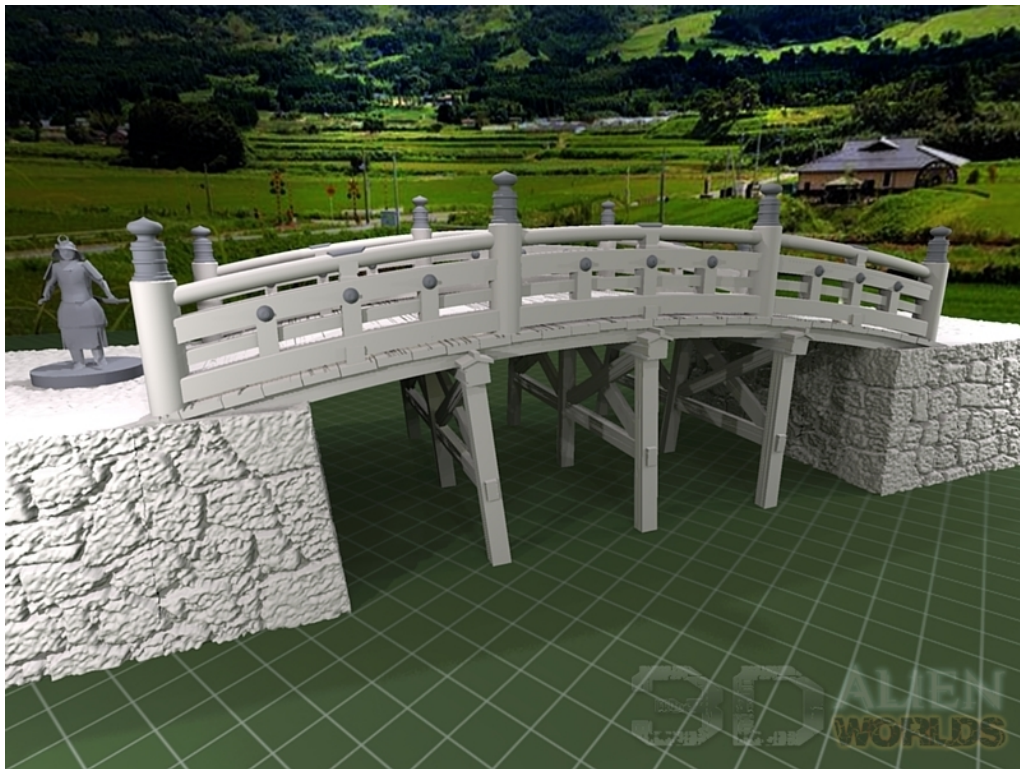


Big Wooden Bridge :

- ③ *BigBridge-half.STL* **x2**
BigBridge-middle.STL
BigBridge-knob.STL **x8**

Optional support(s) - cut to desired height:

- WoodBridge-endcap.STL* **x2**
BigBridge-support1.STL
BigBridge-support2.STL **x2**



Basic Wooden Bridge :

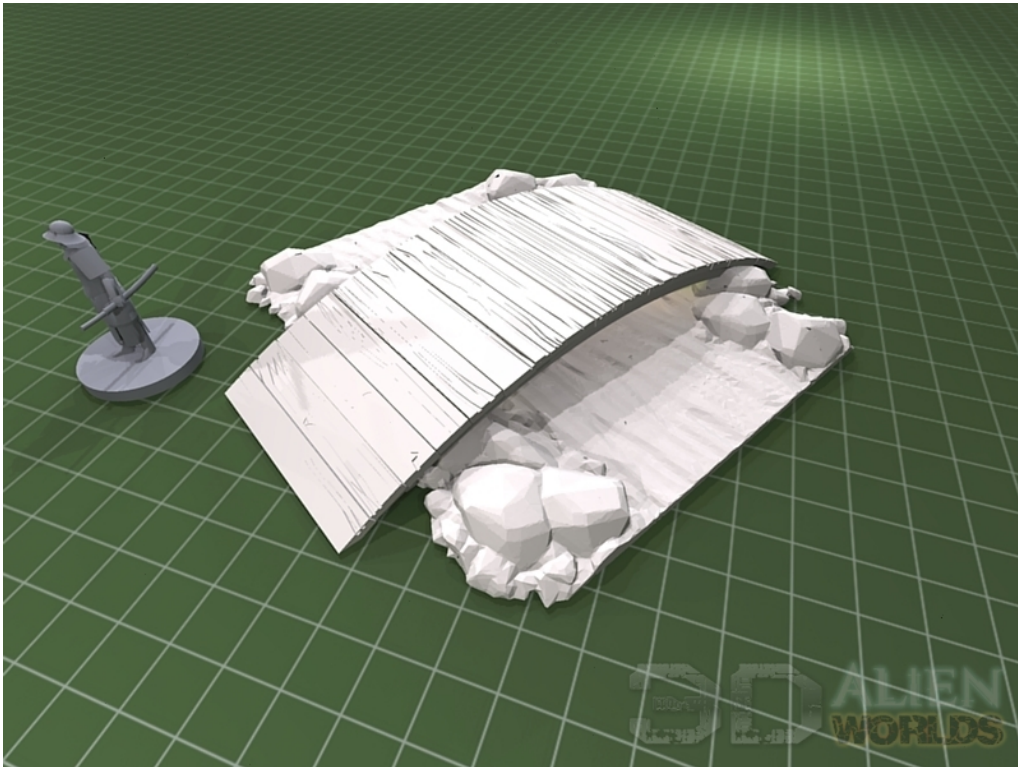
④ *WoodBridge-basic.STL* **x2**

Optional support(s) - cut to desired height:

WoodBridge-endcap.STL **x2**

WoodBridge-support1.STL

WoodBridge-support2.STL



Peasant's Plank Bridge :

- ⑤ *PeasantBridge-plank.STL*
PeasantBridge-support.STL

